

# Medical refrigerators

RR210 - RR310 - RR410



**H-COOL**<sup>®</sup> *pharma*  
GRAM Refrigerated Systems



**H-COOL**<sup>®</sup> *medi*  
GRAM Refrigerated Systems

## Conform medical refrigerators

DIN 13277 (DIN 58345).



## Acoustic and visual alarm

Provides clear notification if either maximum or minimum permitted temperature is reached. A door alarm is also fitted. All alarm parameters are set separately.

## Alarm recording

Hi/Low temperature read out.

## Voltage-free contact

For IT networks, monitoring systems and/or remote alarms.

## Smart defrost

Smart automatic defrosting system with re-evaporation of the defrost water.

## Extra Sensor

"E-sensor" for temperature reference in the storage compartment. The E-sensor can be combined with a reference container.

## High-capacity refrigeration unit

Makes sure the interior quickly returns to the specified temperature after the door has been opened.

## Interior finish

Made of a durable one-piece moulded Polystyrene inner lining with U-shaped rails in the walls for mounting of shelves and drawers.

## The base

4 steel legs, adjustable in height.

## Door lock

For avoiding unintended entry.

## Gram BioLine ventilated air circulation system

Featuring a special distributor plate that ensures consistent temperatures everywhere in the cabinet.

## Self-closing

Solid door as standard or well-insulated glass door with LED light as an optional extra for refrigerators (RR models).

## ATEX

Complete conformity with ATEX - both internal and external.

## Interior fittings

8 to 10 H-Pharma drawers in ABS with breakable dividers, offering multiple organizational possibilities.



**ATEX**  
Explosive Atmospheres



**GMP**  
Good Manufacturing Practice



**GLP**  
Good Laboratory Practice



**LAB**  
Laboratory

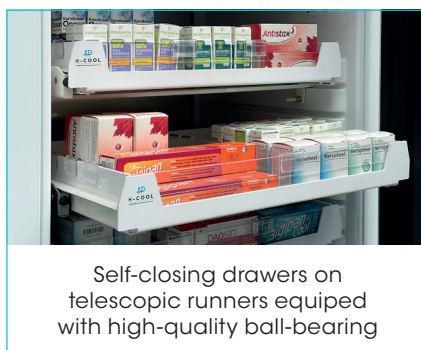
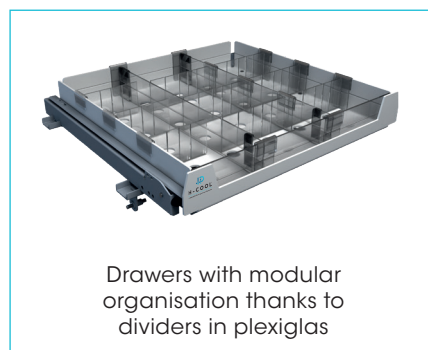
## Comparative table Medical refrigerators full door

Technical specifications	H-Cool pharma RR210 full door	H-Cool pharma RR310 full door	H-Cool pharma RR410 full door	H-Cool medi RR210 full door	H-Cool medi RR310 full door	H-Cool medi RR410 full door
DIN norm	✗	✗	✗	DIN 13277	DIN 13277	DIN 13277
Dimensions H x W x D	831 x 595 x 640 mm	1220 x 595 x 640 mm	1876 x 595 x 640 mm	801/1001 x 595 x 640 mm	1190/1390 x 595 x 640 mm	1776/1976 x 595 x 640 mm
Usable capacity	104 litres	189 litres	312 litres	104 litres	189 litres	312 litres
Temperature range	2 to 15 °C	2 to 15 °C	2 to 15 °C	2 to 20°C	2 to 20°C	2 to 20°C
Temperature display	Digital (outside)	Digital (outside)	Digital (outside)	Digital (outside)	Digital (outside)	Digital (outside)
Noise levels	33,3/33,6 dB(A)	34,1/35,2 dB(A)	33,2/33,7 dB(A)	33.3 dB(A)	34.1 dB(A)	33.2 dB(A)
Quantity of H-Cool drawers	Up to 4 H-Cool drawers	Up to 6 H-Cool drawers	Up to 10 H-Cool drawers	Up to 4 H-Cool drawers	Up to 6 H-Cool drawers	Up to 10 H-Cool drawers
LED lighting	✗	✗	✗	✗	✗	✗
Alarm for open door	✓	✓	✓	✓	✓	✓
Acoustic alarm	✓	✓	✓	✓	✓	✓
Visual alarm	✓	✓	✓	✓	✓	✓
Alarm transmitter	✓	✓	✓	✓	✓	✓

## Medical refrigerators glass door

Technical specifications	H-Cool pharma RR210 glass door	H-Cool pharma RR310 glass door	H-Cool pharma RR410 glass door	H-Cool medi RR210 glass door	H-Cool medi RR310 glass door	H-Cool medi RR410 glass door
DIN norm	✗	✗	✗	DIN 13277	DIN 13277	DIN 13277
Dimensions H x W x D	831 x 595 x 640 mm	1220 x 595 x 640 mm	1876 x 595 x 640 mm	801/1001 x 595 x 640 mm	1190/1390 x 595 x 640 mm	1776/1976 x 595 x 640 mm
Usable capacity	104 litres	189 litres	312 litres	104 litres	189 litres	312 litres
Temperature range	2 to 15 °C	2 to 15 °C	2 to 15 °C	2 to 20°C	2 to 20°C	2 to 20°C
Temperature display	Digital (outside)	Digital (outside)	Digital (outside)	Digital (outside)	Digital (outside)	Digital (outside)
Noise levels	33,3/33,6 dB(A)	34,1/35,2 dB(A)	33,2/33,7 dB(A)	33.3 dB(A)	34.1 dB(A)	33.2 dB(A)
Quantity of H-Cool drawers	Up to 4 H-Cool drawers	Up to 6 H-Cool drawers	Up to 10 H-Cool drawers	Up to 4 H-Cool drawers	Up to 6 H-Cool drawers	Up to 10 H-Cool drawers
LED lighting	✓	✓	✓	✓	✓	✓
Alarm for open door	✓	✓	✓	✓	✓	✓
Acoustic alarm	✓	✓	✓	✓	✓	✓
Visual alarm	✓	✓	✓	✓	✓	✓
Alarm transmitter	✓	✓	✓	✓	✓	✓

## H-Cool drawers by H-Pharma



  
**H - PHARMA**  
 Your Partner in Pharmacy Equipment