

Gondola Units 30/60

Technical catalogue - Gondola Units 11-2023



o
m
r
o
n
p
-
H

Gondola Units
30/60

Summary

Part 1: Composants

Freestanding uprights « T » 30/60	6
Stabilising and fixing	
- Adjustable feet Ø 44 mm	7
- Stabiliser	7
- Adjustable feet Ø 30 mm	7
- Mounting bracket	7
- Safety clip	8
- Tie bars	8
- Base tie bars	8
- Rotating castor	8
- Rotating castor with brake	8
Covering components Compact-H	
- Back panels Compact-H	9
Composants for habillage Easy-H	
- Covering components Easy-H	10
- Back panels perforated	12
- Standard base panel layout for the H-Pharma line	13
- Base panels Easy-H	14
- Plastic aligning device	15
- Cover section side « L » and « T » Compact-H & Easy-H	16
- Cover section side « Edge » Compact-H	16
- Cover section side « Edge » Easy-H	16
- Cover section side « I »	16
- Side base upright « I » Compact-H & Easy-H	17
- Cover section above	17
- Angled top cover section Edge	17
- Side bases « T » Compact-H & Easy-H	17
- Side bases (angles 5°)	18
- Side bases (angles 15°)	18
- Asymmetric side bases Compact-H & Easy-H	18
Gondola Front display	
- Front display 588 for Edge	22
- Gondola head base for Edge	22
- Front display 588 for Compact-H & Easy-H	23
- Gondola head base for Compact-H	23
- Front display 805 for Easy-H	24
- Gondola head base for Easy-H	24

Part 2: Shelves

- Metal shelves Compact-H	25
- Bracket for metal shelves Compact-HH	25
- Metal shelves Easy-H	26
- Bracket for metal shelves Easy-H	26
- Tempered clear glass shelves	27
- Matt glass shelves	27
- Edged glass shelves	27
- Brackets for glass shelves 8 mm	28
- Inverted brackets for 8mm glass shelves	28
- Brackets « Non-Stop » for glass or wood shelves	28
- Reinforcing bar for glass or wood shelves	28
- Console frames with 8 mm glass shelves	29

Discounter

- Depth 250 mm	30
- Depth 330 mm	32
- Depth 420 mm	34
- Vertical depth 270 mm - Height 230 mm	36
- Vertical depth 370 mm - Height 230 mm	37

Drawer units with curved handle

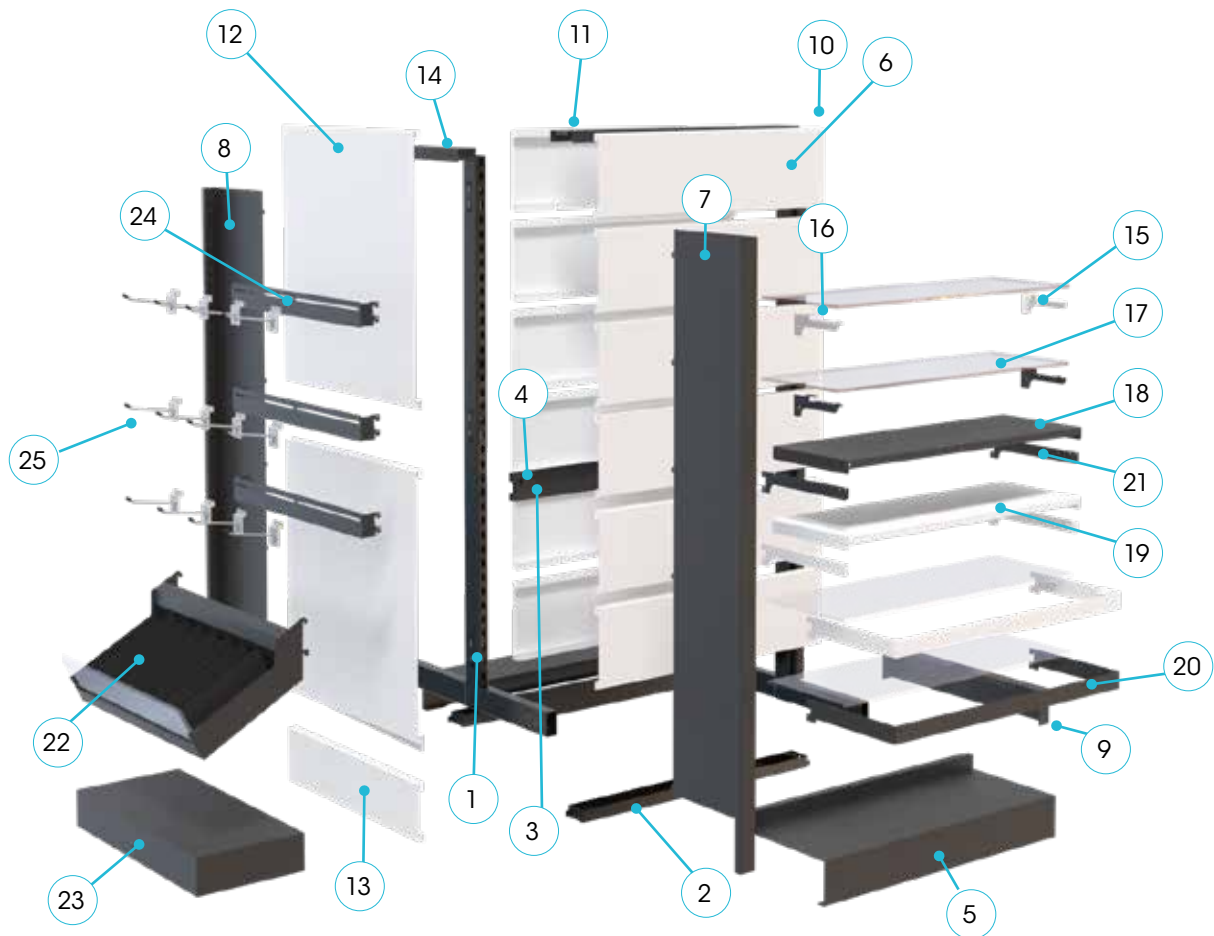
- Unit with 2 single drawers	38
- Unit with 1 double drawer	38
- Unit with 3 single drawers	39
- Unit with 1 double drawer and 1 single drawer	39
- Unit with 4 single drawers	40
- Unit with 2 doubles drawers	40

Drawer units with pull handle

- Unit with 2 single drawers	41
- Unit with 1 double drawer	41
- Unit with 3 single drawers	42
- Unit with 1 double drawers et 1 single drawer	42
- Unit with 4 single drawers	43
- Unit with 2 drawers doubles	43
- Unit with 1 double drawers and 2 single drawers	43

Unit drawers with greater depth	44
---------------------------------	----

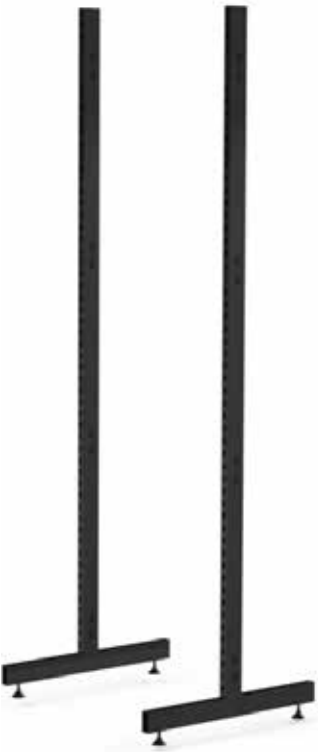
Cabinet with doors	45
--------------------	----



References	Descriptions	Finish
1	30-06-01-1400 Upright "T" - 30/60 H. 1400 mm + adjustable feet	RAL9005
2	30-06-01-705 Basic junction bar L. 705 + 4 screws	RAL9005
3	30-01-705 Junction bar 705	RAL9005
4	50-02-005 Safety clip	ABS
5	30-106-02-705 Base H. 100 x L. 705 mm	RAL7021S
6	30-04-42-705 Back panel 705 x 210 mm	RAL9016S
7	30-06-10.01 Side base right TG H. 1400 mm	RAL7021S
8	30-06-10.02-1400 Side base left TG H. 1400 mm	RAL7021S
9	30-06-10-051 Side base L. 630 mm (2 x 280)	RAL7021S
10	30-06-10-1400 Cover section H. 1400 mm	RAL7021S
11	30-06-05-705 Gondola top cover 705 x 91 mm	RAL7021S
12	30-04-42-588 Back panel 588 x 630 mm	RAL9016S
13	30-04-14-588 Back panel 588 x 140 mm	RAL9016S
14	30-06-05-630 Top cover TG	RAL7021S
15	60-10.01-01 Bracket for glass shelf 8 mm right	RAL9016S
16	60-10.02-01 Bracket for glass shelf 8 mm left	RAL9016S
17	35-01-25-705 Edged glass shelves 8 mm 697 x 250 - 90°	Granité
18	30-06-15-655 Metal shelves Compact-H	RAL7021S
19	30-106-25-655 Metal shelves Easy-H	RAL9016S
20	60-10.03-25-655 Console frames	RAL7021S
21	30-06-15-035 Bracket for metal shelves	RAL7021S
22	30-09-42-588 Discounter	RAL7021S
23	30-06-10-588 Base front display	RAL7021S
24	30-11-20-588 Carrier product holder 588	RAL7021
25	60-02-01 Double hook 200 mm + for overhead price label	Chrome

Part 1: Components

Freestanding uprights « T » 30/60

RAL 9500	Pitch 35 Overall post depth 620 mm	N° référence
	H. 1300 mm 33 pitches 35 mm to divide on each side • Ex.: Base panel 100 + 40 mm + 5 panels H. 210 + 1 x H. 105 mm	30-06-01-1300-9005-G
	H. 1400 mm 36 pitches 35 mm to divide on each side • Ex.: Base panel 100 + 40 mm + 6 panels H. 210 mm	30-06-01-1400-9005-G
	H. 1505 mm 42 pitches 35 mm to divide on each side • Ex.: Base panel 100 + 40 mm + 6 panels H. 210 mm + 1 fonds H.105mm	30-06-01-1505-9005-G
	H. 1610 mm 42 pitches 35 mm to divide on each side • Ex.: Base panel 100 + 40 mm + 7 panels H. 210 mm	30-06-01-1610-9005-G
	H. 1820 mm 48 pitches 35 mm to divide on each side • Ex.: Base panel 100 + 40 mm + 4 panels H. 420 mm	30-06-01-1820-9005-G
	H. 2030 mm 54 pitches 35 mm to divide on each side • Ex.: Base panel 100 + 40 mm + 4 panels H. 420 + 1 x H. 210 mm	30-06-01-2030-9005-G
	H. 2240 mm 60 pitches 35 mm to divide on each side • Ex.: Base panel 100 + 40 mm + 5 panels H. 420 mm	30-06-01-2240-9005-G
	H. 2450 mm 66 pitches 35 mm to divide on each side • Ex.: Base panel 100 + 40 mm + 5 panels H. 420 + 1 x H. 210 mm	30-06-01-2450-9005-G
	H. 2660 mm 72 pitches 35 mm to divide on each side • Ex.: Base panel 100 + 40 mm + 6 panels H. 420 mm	30-06-01-2660-9005-G

- Uprights are sold with adjustable feet pre-attached.

- All « T » uprights are supplied with a concealed foam to reduce the visibility through the rack and pinion.

Stabilising and fixing

Adjustable feet



M10 x H. 70 mm, Ø 44 mm

61-30-01

- High resistance black nylon foot to screw
- 2 pieces per upright « L »
- 1 pieces per upright « I »
- All uprights are provided with adjustable feet pre-attached. (adjustable from 21 to 61 mm)

Stabiliser



M10 x H. 50 mm

61-30-02

- Galvanized steel foot 48 x 20 mm to screw
- Possibility to fix into the floor
- 2 pieces per upright « L »
- 1 piece per upright « I »
- Item systematically provided when « L » units can't be fastened into an adequate wall surface (adjustable from 11 to 51 mm)
- These stabilisers will be used instead of the pre-attached adjustable feet 61-30-03
- Changing must be done on sight by your installation team

Adjustable feet



M10 x H. 70 mm, Ø 30 mm

61-30-03

- High resistance black nylon foot to screw
- 2 pieces per upright « L »
- 1 piece per upright « I »
- All uprights are provided with adjustable feet pre-attached. (adjustable from 21 to 61 mm)

Mounting bracket



60-50-01

- Galvanized steel to snap off
- For uprights 60 x 30 mm
- Dimensions: 80 x 210 mm thickness: 3 mm
- 1 pieces recommended per upright

Safety clip



- Black clip to interlink above the tie bar
- 2 pieces per tie bar

50-02-005

Tie bars



Length	Mid-distance	RAL 9005 G
L. 558 mm	588 mm	30-01-588-9005-G
L. 625 mm	655 mm	30-01-655-9005-G
L. 675 mm	705 mm	30-01-705-9005-G
L. 725 mm	755 mm	30-01-755-9005-G
L. 775 mm	805 mm	30-01-805-9005-G
L. 875 mm	905 mm	30-01-905-9005-G
L. 975 mm	1005 mm	30-01-1005-9005-G
L. 1075 mm	1105 mm	30-01-1105-9005-G

1 tie bar 30-01-xxx for all furniture up to and including 1610 mm.
2 tie bars 30-01-xxx for all furniture from 1820 mm.

Base tie bars



Length	Mid-distance	RAL 9005 G
L. 558 mm	588 mm	30-106-01-588-9005-G
L. 625 mm	655 mm	30-106-01-655-9005-G
L. 675 mm	705 mm	30-106-01-705-9005-G
L. 725 mm	755 mm	30-106-01-755-9005-G
L. 775 mm	805 mm	30-106-01-805-9005-G
L. 875 mm	905 mm	30-106-01-905-9005-G
L. 975 mm	1005 mm	30-106-01-1005-9005-G
L. 1075 mm	1105 mm	30-106-01-1105-9005-G

Tie bar 30-106-xxx basic only for wall units (without castors)

Rotating castor



Load capacity: 90 kg per castor
H. 73 mm / 24 mm - M 10

30-06-10-006

Rotating castor with brake




Load capacity: 60 kg per castor
H. 73 mm / 24 mm - M 10

30-06-10-007

With more than 3 modules, mobility may be reduced. We do not recommend the use of castors.

Covering components Compact-H

Back panels Compact-H

	Dimensions	RAL 7021 S	RAL 9016 S
	H. 70 x W. 588 mm	30-04-07-588-7021-S	30-04-07-588-9016-S
	H. 105 x W. 588 mm	30-04-10-588-7021-S	30-04-10-588-9016-S
	H. 210 x W. 588 mm	30-04-21-588-7021-S	30-04-21-588-9016-S
	H. 420 x W. 588 mm	30-04-42-588-7021-S	30-04-42-588-9016-S
	H. 70 x W. 655 mm	30-04-07-655-7021-S	30-04-07-655-9016-S
	H. 105 x W. 655 mm	30-04-10-655-7021-S	30-04-10-655-9016-S
	H. 210 x W. 655 mm	30-04-21-655-7021-S	30-04-21-655-9016-S
	H. 420 x W. 655 mm	30-04-42-655-7021-S	30-04-42-655-9016-S
	H. 70 x W. 705 mm	30-04-07-705-7021-S	30-04-07-705-9016-S
	H. 105 x W. 705 mm	30-04-10-705-7021-S	30-04-10-705-9016-S
	H. 210 x W. 705 mm	30-04-21-705-7021-S	30-04-21-705-9016-S
	H. 420 x W. 705 mm	30-04-42-705-7021-S	30-04-42-705-9016-S
	H. 70 x W. 755 mm	30-04-07-755-7021-S	30-04-07-755-9016-S
	H. 105 x W. 755 mm	30-04-10-755-7021-S	30-04-10-755-9016-S
	H. 210 x W. 755 mm	30-04-21-755-7021-S	30-04-21-755-9016-S
	H. 420 x W. 755 mm	30-04-42-755-7021-S	30-04-42-755-9016-S
<ul style="list-style-type: none"> - Base panel: 100 mm skirting board and horizontal base + 40 mm raise = 140 mm - A mixed of different back-panels can be used to reach the requested height 	H. 70 x W. 805 mm	30-04-07-805-7021-S	30-04-07-805-9016-S
	H. 105 x W. 805 mm	30-04-10-805-7021-S	30-04-10-805-9016-S
	H. 210 x W. 805 mm	30-04-21-805-7021-S	30-04-21-805-9016-S
	H. 420 x W. 805 mm	30-04-42-805-7021-S	30-04-42-805-9016-S
	H. 70 x W. 905 mm	30-04-07-905-7021-S	30-04-07-905-9016-S
	H. 105 x W. 905 mm	30-04-10-905-7021-S	30-04-10-905-9016-S
	H. 210 x W. 905 mm	30-04-21-905-7021-S	30-04-21-905-9016-S
	H. 420 x W. 905 mm	30-04-42-905-7021-S	30-04-42-905-9016-S
	Base back panels (skirting board)		
	H. 140 x W. 588 mm	30-04-14-588-7021-S	30-04-14-588-9016-S
	H. 140 x W. 655 mm	30-04-14-655-7021-S	30-04-14-655-9016-S
	H. 140 x W. 705 mm	30-04-14-705-7021-S	30-04-14-705-9016-S
	H. 140 x W. 755 mm	30-04-14-755-7021-S	30-04-14-755-9016-S
	H. 140 x W. 805 mm	30-04-14-805-7021-S	30-04-14-805-9016-S
	H. 140 x W. 905 mm	30-04-14-905-7021-S	30-04-14-905-9016-S

Covering components Easy-H

Back panels Easy-H

	Dimensions	RAL 7021 S	RAL 9016 S
	H. 105 x W. 588 mm	30-104-10-588-7021-S	30-104-10-588-9016-S
	H. 175 x W. 588 mm	30-104-17-588-7021-S	30-104-17-588-9016-S
	H. 210 x W. 588 mm	30-104-21-588-7021-S	30-104-21-588-9016-S
	H. 420 x W. 588 mm	30-104-42-588-7021-S	30-104-42-588-9016-S
	H. 630 x W. 588 mm	30-104-63-588-7021-S	30-104-63-588-9016-S
	H. 105 x W. 655 mm	30-104-10-655-7021-S	30-104-10-655-9016-S
	H. 175 x W. 655 mm	30-104-17-655-7021-S	30-104-17-655-9016-S
	H. 210 x W. 655 mm	30-104-21-655-7021-S	30-104-21-655-9016-S
	H. 420 x W. 655 mm	30-104-42-655-7021-S	30-104-42-655-9016-S
	H. 630 x W. 655 mm	30-104-63-655-7021-S	30-104-63-655-9016-S
<ul style="list-style-type: none"> - Base panel: 100 mm skirting board and horizontal base + 40 mm raise = 140 mm - A mixed of different back-panels can be used to reach the requested height 	H. 105 x W. 705 mm	30-104-10-705-7021-S	30-104-10-705-9016-S
	H. 175 x W. 705 mm	30-104-17-705-7021-S	30-104-17-705-9016-S
	H. 210 x W. 705 mm	30-104-21-705-7021-S	30-104-21-705-9016-S
	H. 420 x W. 705 mm	30-104-42-705-7021-S	30-104-42-705-9016-S
	H. 630 x W. 705 mm	30-104-63-705-7021-S	30-104-63-705-9016-S
	H. 105 x W. 755 mm	30-104-10-755-7021-S	30-104-10-755-9016-S
	H. 175 x W. 755 mm	30-104-17-755-7021-S	30-104-17-755-9016-S
	H. 210 x W. 755 mm	30-104-21-755-7021-S	30-104-21-755-9016-S
	H. 420 x W. 755 mm	30-104-42-755-7021-S	30-104-42-755-9016-S
	H. 630 x W. 755 mm	30-104-63-755-7021-S	30-104-63-755-9016-S
	H. 105 x W. 805 mm	30-104-10-805-7021-S	30-104-10-805-9016-S
	H. 175 x W. 805 mm	30-104-17-805-7021-S	30-104-17-805-9016-S
	H. 210 x W. 805 mm	30-104-21-805-7021-S	30-104-21-805-9016-S
	H. 420 x W. 805 mm	30-104-42-805-7021-S	30-104-42-805-9016-S
	H. 630 x W. 805 mm	30-104-63-805-7021-S	30-104-63-805-9016-S
	H. 105 x W. 905 mm	30-104-10-905-7021-S	30-104-10-905-9016-S
	H. 175 x W. 905 mm	30-104-17-905-7021-S	30-104-17-905-9016-S
	H. 210 x W. 905 mm	30-104-21-905-7021-S	30-104-21-905-9016-S
	H. 420 x W. 905 mm	30-104-42-905-7021-S	30-104-42-905-9016-S
	H. 630 x W. 905 mm	30-104-63-905-7021-S	30-104-63-905-9016-S

Dimensions

H. 105 x W. 1005 mm
 H. 175 x W. 1005 mm
 H. 210 x W. 1005 mm
 H. 420 x W. 1005 mm
 H. 630 x W. 1005 mm

RAL 7021 S

30-104-10-1005-7021-S
 30-104-17-1005-7021-S
 30-104-21-1005-7021-S
 30-104-42-1005-7021-S
 30-104-63-1005-7021-S

RAL 9016 S

30-104-10-1005-9016-S
 30-104-17-1005-9016-S
 30-104-21-1005-9016-S
 30-104-42-1005-9016-S
 30-104-63-1005-9016-S

H. 105 x W. 1105 mm
 H. 175 x W. 1105 mm
 H. 210 x W. 1105 mm
 H. 420 x W. 1105 mm
 H. 630 x W. 1105 mm

30-104-10-1105-7021-S
 30-104-17-1105-7021-S
 30-104-21-1105-7021-S
 30-104-42-1105-7021-S
 30-104-63-1105-7021-S

30-104-10-1105-9016-S
 30-104-17-1105-9016-S
 30-104-21-1105-9016-S
 30-104-42-1105-9016-S
 30-104-63-1105-9016-S

Base back panels (skirting board)

H. 140 x W. 588 mm
 H. 140 x W. 655 mm
 H. 140 x W. 705 mm
 H. 140 x W. 755 mm
 H. 140 x W. 805 mm
 H. 140 x W. 905 mm
 H. 140 x W. 1005 mm
 H. 140 x W. 1105 mm

30-104-14-588-7021-S
 30-104-14-655-7021-S
 30-104-14-705-7021-S
 30-104-14-755-7021-S
 30-104-14-805-7021-S
 30-104-14-905-7021-S
 30-104-14-1005-7021-S
 30-104-14-1105-7021-S

30-104-14-588-9016-S
 30-104-14-655-9016-S
 30-104-14-705-9016-S
 30-104-14-755-9016-S
 30-104-14-805-9016-S
 30-104-14-905-9016-S
 30-104-14-1005-9016-S
 30-104-14-1105-9016-S



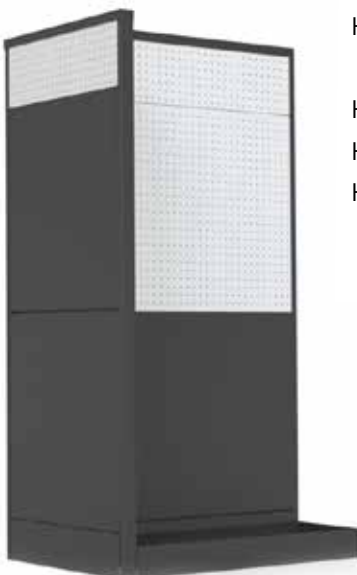
Back panels perforated

Panel thickness= 1,5 mm
Perforation = Ø 5,5 mm
Mid-distance = 25 mm



Dimensions	RAL 7021 S	RAL 9016 S
H. 210 x W. 588 mm	30-114-21-588-7021-S	30-114-21-588-9016-S
H. 420 x W. 588 mm	30-114-42-588-7021-S	30-114-42-588-9016-S
H. 630 x W. 588 mm	30-114-63-588-7021-S	30-114-63-588-9016-S
H. 210 x W. 655 mm	30-114-21-655-7021-S	30-114-21-655-9016-S
H. 420 x W. 655 mm	30-114-42-655-7021-S	30-114-42-655-9016-S
H. 630 x W. 655 mm	30-114-63-655-7021-S	30-114-63-655-9016-S
H. 210 x W. 705 mm	30-114-21-705-7021-S	30-114-21-705-9016-S
H. 420 x W. 705 mm	30-114-42-705-7021-S	30-114-42-705-9016-S
H. 630 x W. 705 mm	30-114-63-705-7021-S	30-114-63-705-9016-S
H. 210 x W. 755 mm	30-114-21-755-7021-S	30-114-21-755-9016-S
H. 420 x W. 755 mm	30-114-42-755-7021-S	30-114-42-755-9016-S
H. 630 x W. 755 mm	30-114-63-755-7021-S	30-114-63-755-9016-S
H. 210 x W. 805 mm	30-114-21-805-7021-S	30-114-21-805-9016-S
H. 420 x W. 805 mm	30-114-42-805-7021-S	30-114-42-805-9016-S
H. 630 x W. 805 mm	30-114-63-805-7021-S	30-114-63-805-9016-S
H. 210 x W. 905 mm	30-114-21-905-7021-S	30-114-21-905-9016-S
H. 420 x W. 905 mm	30-114-42-905-7021-S	30-114-42-905-9016-S
H. 630 x W. 905 mm	30-114-63-905-7021-S	30-114-63-905-9016-S
H. 210 x W. 1005 mm	30-114-21-1005-7021-S	30-114-21-1005-9016-S
H. 420 x W. 1005 mm	30-114-42-1005-7021-S	30-114-42-1005-9016-S
H. 630 x W. 1005 mm	30-114-63-1005-7021-S	30-114-63-1005-9016-S
H. 210 x W. 1105 mm	30-114-21-1105-7021-S	30-114-21-1105-9016-S
H. 420 x W. 1105 mm	30-114-42-1105-7021-S	30-114-42-1105-9016-S
H. 630 x W. 1105 mm	30-114-63-1105-7021-S	30-114-63-1105-9016-S

Applications:



Standard base panel layout for the H-Pharma line

COMPACT-H

Furniture 1100: Height = 1085 mm

1 x 140 (base / plinth) + 2x420 + 1 x 105

Furniture 1300: Height = 1295 mm

1 x 140 (base / plinth) + 1 x 105 + 5x210

Furniture 1400: Height = 1400 mm

1 x 140 (base / plinth) + 3x420

Furniture 1505: Height = 1505 mm

1 x 140 (base / plinth) + 3x420 + 1 x 105

Furniture 1610: Height = 1610 mm

1 x 140 (base / plinth) + 3x420 + 1 x 210

Furniture 1820: Height = 1820 mm

1 x 140 (base / plinth) + 4x420

Furniture 2030: Height = 2030 mm

1 x 140 (base / plinth) + 4x420 + 1 x 210

Furniture 2240: Height = 2240 mm

1 x 140 (base / plinth) + 5x420

Furniture 2450: Height = 2450 mm

1 x 140 (base / plinth) + 5x420 + 1 x 210

Furniture 2660: Height = 2660 mm

1 x 140 (base / plinth) + 6x420

Furniture 2800: Height = 2800 mm

1 x 140 (base / plinth) + 6x420 + 1 x 140 (base / plinth)

EASY-H

Furniture 1100: Height = 1085 mm

1 x 140 (base / plinth) + 1 x 630 + 1 x 210 + 1 x 105

Furniture 1300: Height = 1295 mm

1 x 140 (base / plinth) + 1 x 105 + 5x210

Furniture 1400: Height = 1400 mm

1 x 140 (base / plinth) + 2x630

Furniture 1505: Height = 1505 mm

1 x 140 (base / plinth) + 2x630 + 1 x 105

Furniture 1610: Height = 1610 mm

1 x 140 (base / plinth) + 2x630 + 1 x 210

Furniture 1820: Height = 1820 mm

1 x 140 (base / plinth) + 2x630 + 1 x 420

Furniture 2030: Height = 2030 mm

1 x 140 (base / plinth) + 3x630

Furniture 2240: Height = 2240 mm

1 x 140 (base / plinth) + 3x630 + 1 x 210

Furniture 2450: Height = 2450 mm

1 x 140 (base / plinth) + 3x630 + 1 x 420

Furniture 2660: Height = 2660 mm

1 x 140 (base / plinth) + 4x630

Furniture 2800: Height = 2800 mm

1 x 140 (base / plinth) + 4x630 + 1 x 140 (base / plinth)

Base panels Easy-H

Dimensions	RAL 7021 S	RAL 9016 S
For upright, overall D. 340 mm		
H. 100 x W. 588 x D. 270 mm	30-106-02-588-7021-S	30-106-02-588-9016-S
H. 100 x W. 655 x D. 270 mm	30-106-02-655-7021-S	30-106-02-655-9016-S
H. 100 x W. 705 x D. 270 mm	30-106-02-705-7021-S	30-106-02-705-9016-S
H. 100 x W. 755 x D. 270 mm	30-106-02-755-7021-S	30-106-02-755-9016-S
H. 100 x W. 805 x D. 270 mm	30-106-02-805-7021-S	30-106-02-805-9016-S
H. 100 x W. 905 x D. 270 mm	30-106-02-905-7021-S	30-106-02-905-9016-S
H. 100 x W. 1005 x D. 270 mm	30-106-02-1005-7021-S	30-106-02-1005-9016-S
H. 100 x W. 1105 x D. 270 mm	30-106-02-1105-7021-S	30-106-02-1105-9016-S
For upright, overall D. 440 mm		
H. 100 x W. 588 x D. 370 mm	30-106-03-588-7021-S	30-106-03-588-9016-S
H. 100 x W. 655 x D. 370 mm	30-106-03-655-7021-S	30-106-03-655-9016-S
H. 100 x W. 705 x D. 370 mm	30-106-03-705-7021-S	30-106-03-705-9016-S
H. 100 x W. 755 x D. 370 mm	30-106-03-755-7021-S	30-106-03-755-9016-S
H. 100 x W. 805 x D. 370 mm	30-106-03-805-7021-S	30-106-03-805-9016-S
H. 100 x W. 905 x P.3 70 mm	30-106-03-905-7021-S	30-106-03-905-9016-S
H. 100 x W. 1005 x D. 370 mm	30-106-03-1005-7021-S	30-106-03-1005-9016-S
H. 100 x W. 1105 x D. 370 mm	30-106-03-1105-7021-S	30-106-03-1105-9016-S
For upright, overall D. 540 mm		
H. 100 x W. 588 x D. 470 mm	30-106-04-588-7021-S	30-106-04-588-9016-S
H. 100 x W. 655 x D. 470 mm	30-106-04-655-7021-S	30-106-04-655-9016-S
H. 100 x W. 705 x D. 470 mm	30-106-04-705-7021-S	30-106-04-705-9016-S
H. 100 x W. 755 x D. 470 mm	30-106-04-755-7021-S	30-106-04-755-9016-S
H. 100 x W. 805 x D. 470 mm	30-106-04-805-7021-S	30-106-04-805-9016-S
H. 100 x W. 905 x D. 470 mm	30-106-04-905-7021-S	30-106-04-905-9016-S
H. 100 x W. 1005 x D. 470 mm	30-106-04-1005-7021-S	30-106-04-1005-9016-S
H. 100 x W. 1105 x D. 470 mm	30-106-04-1105-7021-S	30-106-04-1105-9016-S



Plastic aligning device

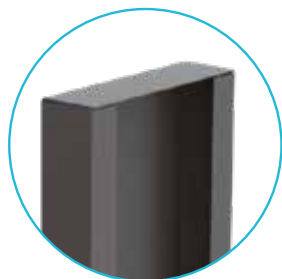
Polyamide element made up of 4 projections to be fixed into the base of the Easy-H base. Its template makes it easy to place under the base and will guarantee perfect and constant alignment of the H-Pharma metal bases.



50-02-010



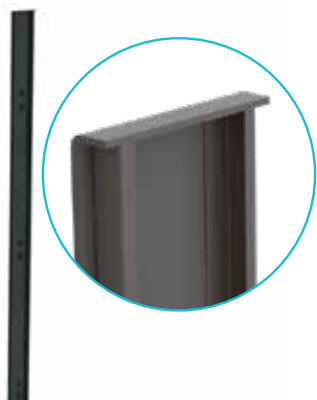
Cover section side « L » and « T » Compact-H & Easy-H



Dimensions	RAL 7021 S	RAL 9016 S
H. 1300 x W. 90 mm	30-06-10-1300-7021-S	30-06-10-1300-9016-S
H. 1400 x W. 90 mm	30-06-10-1400-7021-S	30-06-10-1400-9016-S
H. 1505 x W. 90 mm	30-06-10-1505-7021-S	30-06-10-1505-9016-S
H. 1610 x W. 90 mm	30-04-10-1610-7021-S	30-04-10-1610-9016-S
H. 1820 x W. 90 mm	30-04-10-1820-7021-S	30-04-10-1820-9016-S
H. 2030 x W. 90 mm	30-04-10-2030-7021-S	30-04-10-2030-9016-S
H. 2240 x W. 90 mm	30-04-10-2240-7021-S	30-04-10-2240-9016-S
H. 2450 x W. 90 mm	30-04-10-2450-7021-S	30-04-10-2450-9016-S
H. 2660 x W. 90 mm	30-04-10-2660-7021-S	30-04-10-2660-9016-S
H. 2800 x W. 90 mm	30-04-10-2800-7021-S	30-04-10-2800-9016-S

Cover section side « Edge » Compact-H

Edge



H. 1300 x W. 90 mm	30-06-100-1300-7021-S	30-06-100-1300-9016-S
H. 1400 x W. 90 mm	30-06-100-1400-7021-S	30-06-100-1400-9016-S
H. 1505 x W. 90 mm	30-06-100-1505-7021-S	30-06-100-1505-9016-S
H. 1610 x W. 90 mm	30-04-100-1610-7021-S	30-04-100-1610-9016-S
H. 1820 x W. 90 mm	30-04-100-1820-7021-S	30-04-100-1820-9016-S
H. 2030 x W. 90 mm	30-04-100-2030-7021-S	30-04-100-2030-9016-S
H. 2240 x W. 90 mm	30-04-100-2240-7021-S	30-04-100-2240-9016-S
H. 2450 x W. 90 mm	30-04-100-2450-7021-S	30-04-100-2450-9016-S
H. 2660 x W. 90 mm	30-04-100-2660-7021-S	30-04-100-2660-9016-S
H. 2800 x W. 90 mm	30-04-100-2800-7021-S	30-04-100-2800-9016-S

Edge finish refined to 2 mm for an even more attractive result

Cover section side « Edge » Easy-H

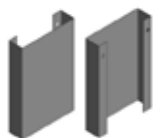
H. 1300 x W. 90 mm	30-106-100-1300-7021-S	30-106-100-1300-9016-S
H. 1400 x W. 90 mm	30-106-100-1400-7021-S	30-106-100-1400-9016-S
H. 1505 x W. 90 mm	30-106-100-1505-7021-S	30-106-100-1505-9016-S
H. 1610 x W. 90 mm	30-104-100-1610-7021-S	30-104-100-1610-9016-S
H. 1820 x W. 90 mm	30-104-100-1820-7021-S	30-104-100-1820-9016-S
H. 2030 x W. 90 mm	30-104-100-2030-7021-S	30-104-100-2030-9016-S
H. 2240 x W. 90 mm	30-104-100-2240-7021-S	30-104-100-2240-9016-S
H. 2450 x W. 90 mm	30-104-100-2450-7021-S	30-104-100-2450-9016-S
H. 2660 x W. 90 mm	30-104-100-2660-7021-S	30-104-100-2660-9016-S
H. 2800 x W. 90 mm	30-104-100-2800-7021-S	30-104-100-2800-9016-S

Cover section side « I »



Dimensions	RAL 7021 S	RAL 9016 S
H. 2030 x W. 90 mm	30-03-10-2030-7021-S	30-03-10-2030-9016-S
H. 2240 x W. 90 mm	30-03-10-2240-7021-S	30-03-10-2240-9016-S
H. 2450 x W. 90 mm	30-03-10-2450-7021-S	30-03-10-2450-9016-S

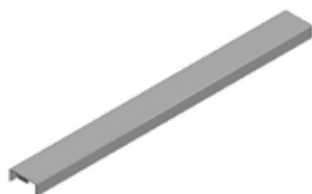
Side base upright « I » Compact-H & Easy-H



Dimensions	RAL 7021 S	RAL 9016 S
H. 100 x W. 90 mm	30-04-10-100-7021-S	30-04-10-100-9016-S

Cover section above

Compact-H & Easy-H



Dimensions	RAL 7021 S	RAL 9016 S
L. 588 x W. 91 mm	30-06-05-588-7021-S	30-06-05-588-9016-S
L. 655 x W. 91 mm	30-06-05-655-7021-S	30-06-05-655-9016-S
L. 705 x W. 91 mm	30-06-05-705-7021-S	30-06-05-705-9016-S
L. 755 x W. 91 mm	30-06-05-755-7021-S	30-06-05-755-9016-S
L. 805 x W. 91 mm	30-06-05-805-7021-S	30-06-05-805-9016-S
L. 905 x W. 91 mm	30-06-05-905-7021-S	30-06-05-905-9016-S
L. 1005 x W. 91 mm	30-06-05-1005-7021-S	30-06-05-1005-9016-S
L. 1105 x W. 91 mm	30-06-05-1105-7021-S	30-06-05-1105-9016-S

Edge



Dimensions	RAL 7021 S	RAL 9016 S
L. 588 x W. 91 mm	30-06-50-588-7021-S	30-06-50-588-9016-S
L. 630 x W. 91 mm	30-06-50-630-7021-S	30-06-50-630-9016-S
L. 655 x W. 91 mm	30-06-50-655-7021-S	30-06-50-655-9016-S
L. 705 x W. 91 mm	30-06-50-705-7021-S	30-06-50-705-9016-S
L. 755 x W. 91 mm	30-06-50-755-7021-S	30-06-50-755-9016-S
L. 805 x W. 91 mm	30-06-50-805-7021-S	30-06-50-805-9016-S
L. 905 x W. 91 mm	30-06-50-905-7021-S	30-06-50-905-9016-S

Angled top cover section Edge



Edge on top 22,5°	30-06-50-22-7021-S	30-06-50-22-9016-S
Edge on top 30°	30-06-50-30-7021-S	30-06-50-30-9016-S
Top cover section 22,5°	30-04-06-001-22-7021-S	30-04-06-001-22-9016-S
Top cover section 30°	30-04-06-001-30-7021-S	30-04-06-001-30-9016-S

Side bases « T » Compact-H & Easy-H



Dimensions	RAL 7021 S	RAL 9016 S
H. 100 x L. 630 mm	30-06-10-051-7021-S	30-06-10-051-9016-S

Side bases (angles 5°)



Dimensions	RAL 7021 S	RAL 9016 S
Right: H. 100 x L. 630 mm	30-06-10-053-01-7021-S	30-06-10-053-01-9016-S
Left: H. 100 x L. 630 mm	30-06-10-053-02-7021-S	30-06-10-053-02-9016-S

Side bases (angles 15°)



Dimensions	RAL 7021 S	RAL 9016 S
Right: H. 100 x L. 630 mm	30-06-10-054-01-7021-S	30-06-10-054-01-9016-S
Left: H. 100 x L. 630 mm	30-06-10-054-02-7021-S	30-06-10-054-02-9016-S

Asymmetric side bases Compact-H & Easy-H



Dimensions	RAL 7021 S	RAL 9016 S
L. 370 + 270 mm	30-06-10-057.01-7021-S	30-06-10-057.01-9016-S
L. 370 + 270 mm	30-06-10-057.02-7021-S	30-06-10-057.02-9016-S
L. 470 + 270 mm	30-06-10-056.01-7021-S	30-06-10-056.01-9016-S
L. 470 + 270 mm	30-06-10-056.02-7021-S	30-06-10-056.02-9016-S
L. 470 + 370 mm	30-06-10-058.01-7021-S	30-06-10-058.01-9016-S
L. 470 + 370 mm	30-06-10-058.02-7021-S	30-06-10-058.02-9016-S

All RAL colors are available upon request. Delays of 8 weeks.

Create specific shapes using either the 5° or 15° side base covers

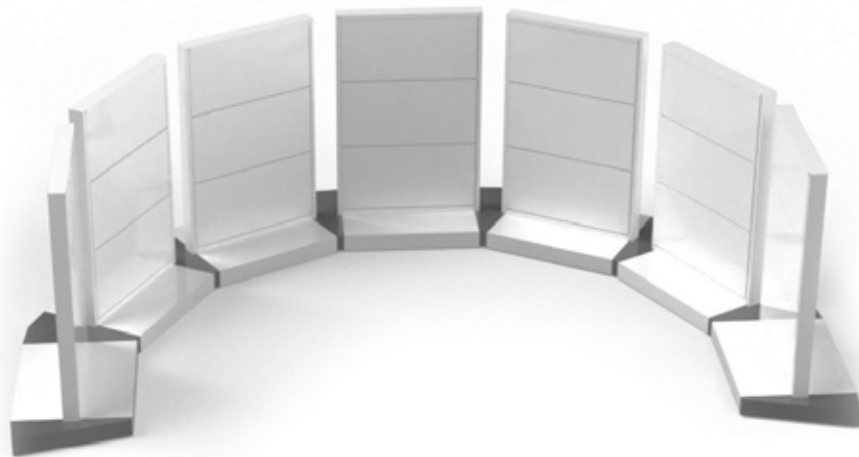
Classic layout



Side bases (angles 5°)

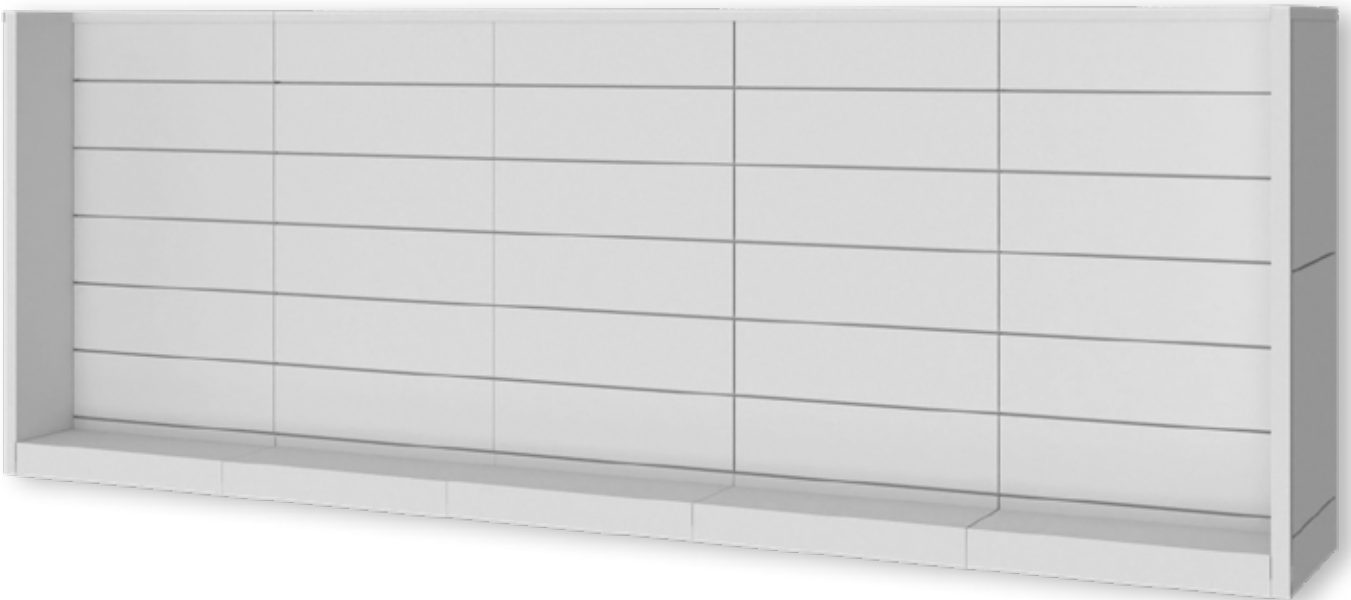


Side bases (angles 15°)



Possible combination: 0°, 5°, 10°, 15°, 20° and 30°


Classic layout



Front display 588 for Edge

	Front display 1100	TG-588-1300-7021-S	TG-588-1300-9016-S
	Front display 588 x H. 1100 is composed of:		
	1x right lateral side	30-06-10.01-1100-7021-S	30-06-10.01-1100-9016-S
	1x left lateral side	30-06-10.02-1100-7021-S	30-06-10.02-1100-9016-S
	1x top cover	30-06-50-630-7021-S	30-06-50-630-9016-S
	Front display 1300	TG-588-1400-7021-S	TG-588-1400-9016-S
	Front display 588 x H. 1300 is composed of:		
1x right lateral side	30-06-10.01-1300-7021-S	30-06-10.01-1300-9016-S	
1x left lateral side	30-06-10.02-1300-7021-S	30-06-10.02-1300-9016-S	
1x top cover	30-06-50-630-7021-S	30-06-50-630-9016-S	
Front display 1400	TG-588-1400-7021-S	TG-588-1400-9016-S	
Front display 588 x H. 1400 is composed of:			
1x right lateral side	30-06-10.01-1400-7021-S	30-06-10.01-1400-9016-S	
1x left lateral side	30-06-10.02-1400-7021-S	30-06-10.02-1400-9016-S	
1x top cover	30-06-50-630-7021-S	30-06-50-630-9016-S	
Front display 1500	TG-588-1500-7021-S	TG-588-1500-9016-S	
Front display 588 x H. 1500 is composed of:			
1x right lateral side	30-06-10.01-1500-7021-S	30-06-10.01-1500-9016-S	
1x left lateral side	30-06-10.02-1500-7021-S	30-06-10.02-1500-9016-S	
1x top cover	30-06-50-630-7021-S	30-06-50-630-9016-S	
Front display 1610	TG-588-1610-7021-S	TG-588-1610-9016-S	
Front display 588 x H. 1610 is composed of:			
1x right lateral side	30-06-10.01-1610-7021-S	30-06-10.01-1610-9016-S	
1x left lateral side	30-06-10.02-1610-7021-S	30-06-10.02-1610-9016-S	
1x top cover	30-06-50-630-7021-S	30-06-50-630-9016-S	
Front display 1820	TG-588-1820-7021-S	TG-588-1820-9016-S	
Front display 588 x H. 1820 is composed of:			
1x right lateral side	30-06-10.01-1820-7021-S	30-06-10.01-1820-9016-S	
1x left lateral side	30-06-10.02-1820-7021-S	30-06-10.02-1820-9016-S	
1x top cover	30-06-50-630-7021-S	30-06-50-630-9016-S	

Gondola head base for Edge

	Dimensions	RAL 7021 S	RAL 9016 S
	H. 100 x L. 588 x D. 250 mm	30-06-10-588-7021-S	30-06-10-588-9016-S

To cover the gondola head, use the 588 mm base panels starting with a base panel H. 140 mm

Front display 588 for Compact-H & Easy-H



Front display 1100

TG-588-1300-7021-S
TG-588-1300-9016-S

Front display 588 x H. 1100 is composed of:

1x right lateral side	30-06-10.01-1100-7021-S	30-06-10.01-1100-9016-S
1x left lateral side	30-06-10.02-1100-7021-S	30-06-10.02-1100-9016-S
1x top cover	30-06-05-630-7021-S	30-06-05-630-9016-S

Front display 1300

TG-588-1400-7021-S
TG-588-1400-9016-S

Front display 588 x H. 1300 is composed of:

1x right lateral side	30-06-10.01-1300-7021-S	30-06-10.01-1300-9016-S
1x left lateral side	30-06-10.02-1300-7021-S	30-06-10.02-1300-9016-S
1x top cover	30-06-05-630-7021-S	30-06-05-630-9016-S

Front display 1400

TG-588-1400-7021-S
TG-588-1400-9016-S

Front display 588 x H. 1400 is composed of:

1x right lateral side	30-06-10.01-1400-7021-S	30-06-10.01-1400-9016-S
1x left lateral side	30-06-10.02-1400-7021-S	30-06-10.02-1400-9016-S
1x top cover	30-06-05-630-7021-S	30-06-05-630-9016-S

Front display 1500

TG-588-1500-7021-S
TG-588-1500-9016-S

Front display 588 x H. 1500 is composed of:

1x right lateral side	30-06-10.01-1500-7021-S	30-06-10.01-1500-9016-S
1x left lateral side	30-06-10.02-1500-7021-S	30-06-10.02-1500-9016-S
1x top cover	30-06-05-630-7021-S	30-06-05-630-9016-S

Front display 1610

TG-588-1610-7021-S
TG-588-1610-9016-S

Front display 588 x H. 1610 is composed of:

1x right lateral side	30-06-10.01-1610-7021-S	30-06-10.01-1610-9016-S
1x left lateral side	30-06-10.02-1610-7021-S	30-06-10.02-1610-9016-S
1x top cover	30-06-05-630-7021-S	30-06-05-630-9016-S

Front display 1820

TG-588-1820-7021-S
TG-588-1820-9016-S

Front display 588 x H. 1820 is composed of:

1x right lateral side	30-06-10.01-1820-7021-S	30-06-10.01-1820-9016-S
1x left lateral side	30-06-10.02-1820-7021-S	30-06-10.02-1820-9016-S
1x top cover	30-06-05-630-7021-S	30-06-05-630-9016-S

Gondola head base for Compact-H



Dimensions

RAL 7021 S
RAL 9016 S

H. 100 x L. 588 x D. 250 mm

30-06-10-588-7021-S

30-06-10-588-9016-S

To cover the gondola head, use the 588 mm base panels starting with a base panel H. 140 mm

Front display 805 for Easy-H

	Front display 1100	TG-588-1300-7021-S	TG-588-1300-9016-S
	Front display 805 x H. 1100 is composed of:		
	1x right lateral side	30-06-10.01-805-1100-7021-S	30-06-10.01-805-1100-9016-S
	1x left lateral side	30-06-10.02-805-1100-7021-S	30-06-10.02-805-1100-9016-S
	1x top cover	30-06-05-846-7021-S	30-06-05-846-9016-S
	Front display 1300	TG-588-1400-7021-S	TG-588-1400-9016-S
	Front display 805 x H. 1300 is composed of:		
	1x right lateral side	30-06-10.01-805-1300-7021-S	30-06-10.01-805-1300-9016-S
	1x left lateral side	30-06-10.02-805-1300-7021-S	30-06-10.02-805-1300-9016-S
	1x top cover	30-06-05-846-7021-S	30-06-05-846-9016-S
Front display 1400	TG-588-1400-7021-S	TG-588-1400-9016-S	
Front display 805 x H. 1400 is composed of:			
1x right lateral side	30-06-10.01-805-1400-7021-S	30-06-10.01-805-1400-9016-S	
1x left lateral side	30-06-10.02-805-1400-7021-S	30-06-10.02-805-1400-9016-S	
1x top cover	30-06-05-846-7021-S	30-06-05-846-9016-S	
Front display 1500	TG-588-1500-7021-S	TG-588-1500-9016-S	
Front display 805 x H. 1500 is composed of:			
1x right lateral side	30-06-10.01-805-1500-7021-S	30-06-10.01-805-1500-9016-S	
1x left lateral side	30-06-10.02-805-1500-7021-S	30-06-10.02-805-1500-9016-S	
1x top cover	30-06-05-846-7021-S	30-06-05-846-9016-S	
Front display 1610	TG-588-1610-7021-S	TG-588-1610-9016-S	
Front display 805 x H. 1610 is composed of:			
1x right lateral side	30-06-10.01-805-1610-7021-S	30-06-10.01-805-1610-9016-S	
1x left lateral side	30-06-10.02-805-1610-7021-S	30-06-10.02-805-1610-9016-S	
1x top cover	30-06-05-846-7021-S	30-06-05-846-9016-S	
Front display 1820	TG-588-1820-7021-S	TG-588-1820-9016-S	
Front display 805 x H. 1820 is composed of:			
1x right lateral side	30-06-10.01-805-1820-7021-S	30-06-10.01-805-1820-9016-S	
1x left lateral side	30-06-10.02-805-1820-7021-S	30-06-10.02-805-1820-9016-S	
1x top cover	30-06-05-846-7021-S	30-06-05-846-9016-S	

Gondola head base for Easy-H

	Dimensions	RAL 7021 S	RAL 9016 S
	H. 100 x L. 805 x D. 250 mm	30-06-10-805-7021-S	30-06-10-805-9016-S

To cover the gondola head, use the 588 mm base panels starting with a base panel H. 140 mm

Part 2: Shelves


Metal shelves Compact-H

Shelf thickness: 20 mm	Dimensions	RAL 7021 S	RAL 9016 S
150 mm	L. 588 x D. 150 mm	30-06-15-588-7021-S	30-06-15-588-9016-S
	L. 655 x D. 150 mm	30-06-15-655-7021-S	30-06-15-655-9016-S
	L. 705 x D. 150 mm	30-06-15-705-7021-S	30-06-15-705-9016-S
	L. 755 x D. 150 mm	30-06-15-755-7021-S	30-06-15-755-9016-S
	L. 805 x D. 150 mm	30-06-15-805-7021-S	30-06-15-805-9016-S
	L. 905 x D. 150 mm	30-06-15-905-7021-S	30-06-15-905-9016-S
250 mm	L. 588 x D. 250 mm	30-06-25-588-7021-S	30-06-25-588-9016-S
	L. 655 x D. 250 mm	30-06-25-655-7021-S	30-06-25-655-9016-S
	L. 705 x D. 250 mm	30-06-25-705-7021-S	30-06-25-705-9016-S
	L. 755 x D. 250 mm	30-06-25-755-7021-S	30-06-25-755-9016-S
	L. 805 x D. 250 mm	30-06-25-805-7021-S	30-06-25-805-9016-S
	L. 905 x D. 250 mm	30-06-25-905-7021-S	30-06-25-905-9016-S
300 mm	L. 588 x D. 300 mm	30-06-30-588-7021-S	30-06-30-588-9016-S
	L. 655 x D. 300 mm	30-06-30-655-7021-S	30-06-30-655-9016-S
	L. 705 x D. 300 mm	30-06-30-705-7021-S	30-06-30-705-9016-S
	L. 755 x D. 300 mm	30-06-30-755-7021-S	30-06-30-755-9016-S
	L. 805 x D. 300 mm	30-06-30-805-7021-S	30-06-30-805-9016-S
	L. 905 x D. 300 mm	30-06-30-905-7021-S	30-06-30-905-9016-S
400 mm	L. 655 x D. 400 mm	30-06-40-655-7021-S	30-06-40-655-9016-S
	L. 705 x D. 400 mm	30-06-40-705-7021-S	30-06-40-705-9016-S
	L. 755 x D. 400 mm	30-06-40-755-7021-S	30-06-40-755-9016-S
	L. 805 x D. 400 mm	30-06-40-805-7021-S	30-06-40-805-9016-S
	L. 905 x D. 400 mm	30-06-40-905-7021-S	30-06-40-905-9016-S


Bracket for metal shelves Compact-H

Pitch 35	L. 150 mm	G/D	30-06-15-035-7021-S	30-06-15-035-9016-S
	L. 250 mm	G/D	30-06-25-035-7021-S	30-06-25-035-9016-S
	L. 300 mm	G/D	30-06-30-035-7021-S	30-06-30-035-9016-S
	L. 400 mm	G/D	30-06-40-035-7021-S	30-06-40-035-9016-S

Metal shelves Easy-H

Shelf thickness: 20 mm	Dimensions	RAL 7021 S	RAL 9016 S
250 mm 	L. 588 x D. 250 mm	30-106-25-588-7021-S	30-106-25-588-9016-S
	L. 655 x D. 250 mm	30-106-25-655-7021-S	30-106-25-655-9016-S
	L. 705 x D. 250 mm	30-106-25-705-7021-S	30-106-25-705-9016-S
	L. 755 x D. 250 mm	30-106-25-755-7021-S	30-106-25-755-9016-S
	L. 805 x D. 250 mm	30-106-25-805-7021-S	30-106-25-805-9016-S
	L. 905 x D. 250 mm	30-106-25-905-7021-S	30-106-25-905-9016-S
	L. 1005 x D. 250 mm	30-106-25-1005-7021-S	30-106-25-1005-9016-S
	L. 1105 x D. 250 mm	30-106-25-1105-7021-S	30-106-25-1105-9016-S
	300 mm	L. 588 x D. 300 mm	30-106-30-588-7021-S
L. 655 x D. 300 mm		30-106-30-655-7021-S	30-106-30-655-9016-S
L. 705 x D. 300 mm		30-106-30-705-7021-S	30-106-30-705-9016-S
L. 755 x D. 300 mm		30-106-30-755-7021-S	30-106-30-755-9016-S
L. 805 x D. 300 mm		30-106-30-805-7021-S	30-106-30-805-9016-S
L. 905 x D. 300 mm		30-106-30-905-7021-S	30-106-30-905-9016-S
L. 1005 x D. 300 mm		30-106-30-1005-7021-S	30-106-30-1005-9016-S
L. 1105 x D. 300 mm		30-106-30-1105-7021-S	30-106-30-1105-9016-S
350 mm		L. 588 x D. 350 mm	30-106-35-588-7021-S
	L. 655 x D. 350 mm	30-106-35-655-7021-S	30-106-35-655-9016-S
	L. 705 x D. 350 mm	30-106-35-705-7021-S	30-106-35-705-9016-S
	L. 755 x D. 350 mm	30-106-35-755-7021-S	30-106-35-755-9016-S
	L. 805 x D. 350 mm	30-106-35-805-7021-S	30-106-35-805-9016-S
	L. 905 x D. 350 mm	30-106-35-905-7021-S	30-106-35-905-9016-S
	L. 1005 x D. 350 mm	30-106-35-1005-7021-S	30-106-35-1005-9016-S
	L. 1105 x D. 350 mm	30-106-35-1105-7021-S	30-106-35-1105-9016-S
	400 mm	L. 588 x D. 400 mm	30-106-40-588-7021-S
L. 655 x D. 400 mm		30-106-40-655-7021-S	30-106-40-655-9016-S
L. 705 x D. 400 mm		30-106-40-705-7021-S	30-106-40-705-9016-S
L. 755 x D. 400 mm		30-106-40-755-7021-S	30-106-40-755-9016-S
L. 805 x D. 400 mm		30-106-40-805-7021-S	30-106-40-805-9016-S
L. 905 x D. 400 mm		30-106-40-905-7021-S	30-106-40-905-9016-S
L. 1005 x D. 400 mm		30-106-40-1005-7021-S	30-106-40-1005-9016-S
L. 1105 x D. 400 mm		30-106-40-1105-7021-S	30-106-40-1105-9016-S
500 mm		L. 588 x D. 500 mm	30-106-50-588-7021-S
	L. 655 x D. 500 mm	30-106-50-655-7021-S	30-106-50-655-9016-S
	L. 705 x D. 500 mm	30-106-50-705-7021-S	30-106-50-705-9016-S
	L. 755 x D. 500 mm	30-106-50-755-7021-S	30-106-50-755-9016-S
	L. 805 x D. 500 mm	30-106-50-805-7021-S	30-106-50-805-9016-S
	L. 905 x D. 500 mm	30-106-50-905-7021-S	30-106-50-905-9016-S
	L. 1005 x D. 500 mm	30-106-50-1005-7021-S	30-106-50-1005-9016-S
	L. 1105 x D. 500 mm	30-106-50-1105-7021-S	30-106-50-1105-9016-S

Bracket for metal shelves Easy-H

Pitch 35	Dimensions		RAL 7021 S	RAL 9016 S
	L. 250 mm	G/D	30-106-25-035-7021-S	30-106-25-035-9016-S
	L. 300 mm	G/D	30-106-30-035-7021-S	30-106-30-035-9016-S
	L. 400 mm	G/D	30-106-40-035-7021-S	30-106-40-035-9016-S
	L. 500 mm *	G/D	30-106-50-035-7021-S	30-106-50-035-9016-S

Tempered clear glass shelves



Dimensions	Mid-distance	Angles 90°	Curved corners R.15 mm
Depth: 150 mm / Thickness: 8 mm			
L. 580 mm	588 mm	—	35-06-15-588
Depth: 200 mm / Thickness: 8 mm			
L. 747 mm	755 mm	35-05-20-755	—
Depth: 250 mm / Thickness: 8 mm			
L. 580 mm	588 mm	35-05-25-588	35-06-25-588
L. 647 mm	655 mm	35-05-25-655	—
L. 697 mm	705 mm	35-05-25-705	35-06-25-705
L. 747 mm	755 mm	35-05-25-755	—
L. 797 mm	805 mm	35-05-25-805	35-06-25-805
L. 897 mm	905 mm	35-05-25-905	35-06-25-905
L. 997 mm	1005 mm	35-05-25-1005	35-06-25-1005
Depth: 300 mm / Thickness: 8 mm			
L. 580 mm	588 mm	35-05-30-588	—
L. 647 mm	655 mm	35-05-30-655	—
L. 697 mm	705 mm	35-05-30-705	—
L. 747 mm	755 mm	35-05-30-755	—
L. 797 mm	805 mm	35-05-30-805	—
L. 897 mm	905 mm	35-05-30-905	—
L. 997 mm	1005 mm	35-05-30-1005	—

Matt glass shelves



Dimensions	Mid-distance	Angles 90°	Curved corners R.15 mm
L. 580 mm	588 mm	35-08-25-588	—
L. 647 mm	655 mm	35-08-25-655	—
L. 697 mm	705 mm	35-08-25-705	—
L. 747 mm	755 mm	35-08-25-755	—
L. 797 mm	805 mm	35-08-25-805	—
L. 897 mm	905 mm	35-08-25-905	—
L. 897 mm	905 mm	35-08-25-905	—

Edged glass shelves



Dimensions	Mid-distance	Angles 90°	Curved corners R.15 mm
Depth: 200 mm / Thickness: 8 mm			
L. 747 mm	755 mm	35-01-20-755	35-02-20-755
L. 797 mm	805 mm	35-01-20-805	35-02-20-805
Depth: 250 mm / Thickness: 8 mm			
L. 580 mm	588 mm	35-01-25-588	35-02-25-588
L. 647 mm	655 mm	35-01-25-655	35-02-25-655
L. 697 mm	705 mm	35-01-25-705	35-02-25-705
L. 747 mm	755 mm	35-01-25-755	35-02-25-755
L. 797 mm	805 mm	35-01-25-805	35-02-25-805
L. 897 mm	905 mm	35-01-25-905	35-02-25-905
Depth: 300 mm / Thickness: 8 mm			
L. 580 mm	588 mm	35-01-30-588	35-02-30-588
L. 647 mm	655 mm	35-01-30-655	35-02-30-655
L. 697 mm	705 mm	35-01-30-705	35-02-30-705
L. 747 mm	755 mm	35-01-30-755	35-02-30-755
L. 797 mm	805 mm	35-01-30-805	35-02-30-805
L. 897 mm	905 mm	35-01-30-905	35-02-30-905

You can fit a price holder on the shelves, see accessories catalogue.



Maximum loading weight 30 kg

Brackets for glass shelves 8 mm



Pitch 35	RAL 7021 S	RAL 9016 S
Right	60-10.01-01-7021-S	60-10.01-01-9016-S
Left	60-10.02-01-7021-S	60-10.02-01-9016-S

Inverted brackets for 8mm glass shelves



Pitch 35	RAL 7021 S	RAL 9016 S
Right	60-10.01-15-25-7021-S	60-10.01-15-25-9016-S
Left	60-10.02-15-25-7021-S	60-10.02-15-25-9016-S

Ideal for inverted "L" and Shop Side Frames Pharma Light

Brackets « Non-Stop » for glass or wood shelves



Pitch 35		Confident for glass shelves		RAL 7021 S	RAL 9016 S
L. 200 mm	L. 180 mm		Right	60-10.01-18-7021-S	60-10.01-18-9016-S
			Left	60-10.02-18-7021-S	60-10.02-18-9016-S
L. 250 mm	L. 245 mm		Right	60-10.01-25-7021-S	60-10.01-25-9016-S
			Left	60-10.02-25-7021-S	60-10.02-25-9016-S
L. 350 mm	L. 345 mm		Right	60-10.01-35-7021-S	60-10.01-35-9016-S
			Left	60-10.02-35-7021-S	60-10.02-35-9016-S
L. 450 mm	L. 445 mm		Right	60-10.01-45-7021-S	60-10.01-45-9016-S
			Left	60-10.02-45-7021-S	60-10.02-45-9016-S
L. 550 mm	L. 645 mm		Right	60-10.01-55-7021-S	60-10.01-55-9016-S
			Left	60-10.02-55-7021-S	60-10.02-55-9016-S



Reinforcing bar for glass or wood shelves



Dimensions	RAL 7021 S	RAL 9016 S
L. 588	60-10.04-90-588-7021-S	60-10.04-90-588-9016-S
L. 655	60-10.04-90-655-7021-S	60-10.04-90-655-9016-S
L. 705	60-10.04-90-705-7021-S	60-10.04-90-705-9016-S
L. 755	60-10.04-90-755-7021-S	60-10.04-90-755-9016-S
L. 805	60-10.04-90-805-7021-S	60-10.04-90-805-9016-S
L. 905	60-10.04-90-905-7021-S	60-10.04-90-905-9016-S
L. 1005	60-10.04-90-1005-7021-S	60-10.04-90-1005-9016-S
L. 1105	60-10.04-90-1105-7021-S	60-10.04-90-1105-9016-S

Ideal for preventing your glass or wood shelves from sagging

Console frames with 8 mm glass shelves

Depth: 250 mm et 300 mm / Thickness: 40 mm



Pitch 35		RAL 7021 S	RAL 9016 S
250 mm	588 mm	60-10.03-25-588-7021-S	60-10.03-25-588-9016-S
	655 mm	60-10.03-25-655-7021-S	60-10.03-25-655-9016-S
	705 mm	60-10.03-25-705-7021-S	60-10.03-25-705-9016-S
	755 mm	60-10.03-25-755-7021-S	60-10.03-25-755-9016-S
	805 mm	60-10.03-25-805-7021-S	60-10.03-25-805-9016-S
	905 mm	60-10.03-25-905-7021-S	60-10.03-25-905-9016-S
	1005 mm	60-10.03-25-1005-7021-S	60-10.03-25-1005-9016-S
	1105 mm	60-10.03-25-1105-7021-S	60-10.03-25-1105-9016-S
300 mm	588 mm	60-10.03-30-588-7021-S	60-10.03-30-588-9016-S
	655 mm	60-10.03-30-655-7021-S	60-10.03-30-655-9016-S
	705 mm	60-10.03-30-705-7021-S	60-10.03-30-705-9016-S
	755 mm	60-10.03-30-755-7021-S	60-10.03-30-755-9016-S
	805 mm	60-10.03-30-805-7021-S	60-10.03-30-805-9016-S
	905 mm	60-10.03-30-905-7021-S	60-10.03-30-905-9016-S
	1005 mm	60-10.03-30-1005-7021-S	60-10.03-30-1005-9016-S
	1105 mm	60-10.03-30-1105-7021-S	60-10.03-30-1105-9016-S

You can fit a price holder on the shelves, see accessories catalogue.

Discounter



Depth 250 mm

Sloping 30°	RAL 7021 S	RAL 9016 S
Discounter assembly mid-distance 588	30-109-25-588-7021-S	30-109-25-588-9016-S
<p><u>A discounter assembly 588/250 is composed of:</u> 1 bracket left, 1 bracket right, 1 base, 4 metallic dividers 250 mm</p> <p>Can be ordered separately: Dividers 250 mm Plexiglass front 578 x H. 120 mm</p>		
30-09-03-588	30-09-02-250-7021-S	30-09-02-250-9016-S
Discounter assembly mid-distance 655	30-109-25-655-7021-S	30-109-25-655-9016-S
<p><u>A discounter assembly 655/250 is composed of:</u> 1 bracket left, 1 bracket right, 1 base, 5 metallic dividers 250 mm</p> <p>Can be ordered separately: Dividers 250 mm Plexiglass front 645 x H. 120 mm</p>		
30-09-03-655	30-09-02-250-7021-S	30-09-02-250-9016-S
Discounter assembly mid-distance 705	30-109-25-705-7021-S	30-109-25-705-9016-S
<p><u>A discounter assembly 705/250 is composed of:</u> 1 bracket left, 1 bracket right, 1 base, 5 metallic dividers 250 mm</p> <p>Can be ordered separately: Dividers 250 mm Plexiglass front 695 x H. 120 mm</p>		
30-09-03-705	30-09-02-250-7021-S	30-09-02-250-9016-S
Discounter assembly mid-distance 755	30-109-25-755-7021-S	30-109-25-755-9016-S
<p><u>A discounter assembly 755/250 is composed of:</u> 1 bracket left, 1 bracket right, 1 base, 5 metallic dividers 250 mm</p> <p>Can be ordered separately: Dividers 250 mm Plexiglass front 745 x H. 120 mm</p>		
30-09-03-755	30-09-02-250-7021-S	30-09-02-250-9016-S



Depth 250 mm

Sloping 30°

	RAL 7021 S	RAL 9016 S
Discounter assembly mid-distance 805	30-109-25-805-7021-S	30-109-25-805-9016-S
<u>A discounter assembly 805/250 is composed of:</u>		
1 bracket left, 1 bracket right, 1 base, 6 metallic dividers 250 mm		
Can be ordered separately:		
Dividers 250 mm	30-09-02-250-7021-S	30-09-02-250-9016-S
Plexiglass front 795 x H. 120 mm	30-09-03-805	
Discounter assembly mid-distance 905	30-109-25-905-7021-S	30-109-25-905-9016-S
<u>A discounter assembly 905/250 is composed of:</u>		
1 bracket left, 1 bracket right, 1 base, 7 metallic dividers 250 mm		
Can be ordered separately:		
Dividers 250 mm	30-09-02-250-7021-S	30-09-02-250-9016-S
Plexiglass front 895 x H. 120 mm	30-09-03-905	
Discounter assembly mid-distance 1005	30-109-25-1005-7021-S	30-109-25-1005-9016-S
<u>A discounter assembly 1005/250 is composed of:</u>		
1 bracket left, 1 bracket right, 1 base, 7 metallic dividers 250 mm		
Can be ordered separately:		
Dividers 250 mm	30-09-02-250-7021-S	30-09-02-250-9016-S
Plexiglass front 995 x H. 120 mm	30-09-03-1005	
Discounter assembly mid-distance 1105	30-109-25-1105-7021-S	30-109-25-1105-9016-S
<u>A discounter assembly 1105/250 is composed of:</u>		
1 bracket left, 1 bracket right, 1 base, 7 metallic dividers 250 mm		
Can be ordered separately:		
Dividers 250 mm	30-09-02-250-7021-S	30-09-02-250-9016-S
Plexiglass front 1095 x H. 120 mm	30-09-03-1105	



Depth 330 mm

Sloping 0° - 15 - 30°	RAL 7021 S	RAL 9016 S
Discounter assembly mid-distance 588	30-109-33-588-7021-S	30-109-33-588-9016-S
<u>A discounter assembly 588/330 is composed of:</u>		
1 bracket left, 1 bracket right, 1 base, 4 metallic dividers 330 mm		
Can be ordered separately:		
Dividers 330 mm	30-09-02-330-7021-S	30-09-02-330-9016-S
Plexiglass front 578 x H. 120 mm 30-09-03-588		
Discounter assembly mid-distance 655	30-109-33-655-7021-S	30-109-33-655-9016-S
<u>A discounter assembly 655/330 is composed of:</u>		
1 bracket left, 1 bracket right, 1 base, 5 metallic dividers 330 mm		
Can be ordered separately:		
Dividers 330 mm	30-09-02-330-7021-S	30-09-02-330-9016-S
Plexiglass front 645 x H. 120 mm 30-09-03-655		
Discounter assembly mid-distance 705	30-109-33-705-7021-S	30-109-33-705-9016-S
<u>A discounter assembly 705/330 is composed of:</u>		
1 bracket left, 1 bracket right, 1 base, 5 metallic dividers 330 mm		
Can be ordered separately:		
Dividers 330 mm	30-09-02-330-7021-S	30-09-02-330-9016-S
Plexiglass front 695 x H. 120 mm 30-09-03-705		
Discounter assembly mid-distance 755	30-109-33-755-7021-S	30-109-33-755-9016-S
<u>A discounter assembly 755/330 is composed of:</u>		
1 bracket left, 1 bracket right, 1 base, 5 metallic dividers 330 mm		
Can be ordered separately:		
Dividers 330 mm	30-09-02-330-7021-S	30-09-02-330-9016-S
Plexiglass front 745 x H. 120 mm 30-09-03-755		



Depth 330 mm

Sloping 0° - 15 - 30°		RAL 7021 S	RAL 9016 S
Discounter assembly mid-distance 805		30-109-33-805-7021-S	30-109-33-805-9016-S
<u>A discounter assembly 805/330 is composed of:</u>			
1 bracket left, 1 bracket right, 1 base, 6 metallic dividers 330 mm			
Can be ordered separately:			
Dividers 330 mm		30-09-02-330-7021-S	30-09-02-330-9016-S
Plexiglass front 795 x H. 120 mm	30-09-03-805		
Discounter assembly mid-distance 905		30-109-33-905-7021-S	30-109-33-905-9016-S
<u>A discounter assembly 905/330 is composed of:</u>			
1 bracket left, 1 bracket right, 1 base, 7 metallic dividers 330 mm			
Can be ordered separately:			
Dividers 330 mm		30-09-02-330-7021-S	30-09-02-330-9016-S
Plexiglass front 895 x H. 120 mm	30-09-03-905		
Discounter assembly mid-distance 1005		30-109-33-1005-7021-S	30-109-33-1005-9016-S
<u>A discounter assembly 1005/330 is composed of:</u>			
1 bracket left, 1 bracket right, 1 base, 7 metallic dividers 330 mm			
Can be ordered separately:			
Dividers 330 mm		30-09-02-330-7021-S	30-09-02-330-9016-S
Plexiglass front 995 x H. 120 mm	30-09-03-1005		
Discounter assembly mid-distance 1105		30-109-33-1105-7021-S	30-109-33-1105-9016-S
<u>A discounter assembly 1105/330 is composed of:</u>			
1 bracket left, 1 bracket right, 1 base, 7 metallic dividers 330 mm			
Can be ordered separately:			
Dividers 330 mm		30-09-02-330-7021-S	30-09-02-330-9016-S
Plexiglass front 1095 x H. 120 mm	30-09-03-1105		



Depth 420 mm

Sloping 0° - 15 - 30°	RAL 7021 S	RAL 9016 S
Discounter assembly mid-distance 588	30-109-42-588-7021-S	30-109-42-588-9016-S
<u>A discounter assembly 588/420 is composed of:</u>		
1 bracket left, 1 bracket right, 1 base, 4 metallic dividers 420 mm		
Can be ordered separately:		
Dividers 420 mm	30-09-02-420-7021-S	30-09-02-420-9016-S
Plexiglass front 578 x H. 120 mm 30-09-03-588		
Discounter assembly mid-distance 655	30-109-42-655-7021-S	30-109-42-655-9016-S
<u>A discounter assembly 655/420 is composed of:</u>		
1 bracket left, 1 bracket right, 1 base, 5 metallic dividers 420 mm		
Can be ordered separately:		
Dividers 420 mm	30-09-02-420-7021-S	30-09-02-420-9016-S
Plexiglass front 645 x H. 120 mm 30-09-03-655		
Discounter assembly mid-distance 705	30-109-42-705-7021-S	30-109-42-705-9016-S
<u>A discounter assembly 705/420 is composed of:</u>		
1 bracket left, 1 bracket right, 1 base, 5 metallic dividers 420 mm		
Can be ordered separately:		
Dividers 420 mm	30-09-02-420-7021-S	30-09-02-420-9016-S
Plexiglass front 695 x H. 120 mm 30-09-03-705		
Discounter assembly mid-distance 755	30-109-42-755-7021-S	30-109-42-755-9016-S
<u>A discounter assembly 755/420 is composed of:</u>		
1 bracket left, 1 bracket right, 1 base, 5 metallic dividers 420 mm		
Can be ordered separately:		
Dividers 420 mm	30-09-02-420-7021-S	30-09-02-420-9016-S
Plexiglass front 745 x H. 120 mm 30-09-03-755		



Depth 420 mm

Sloping 0° - 15 - 30°	RAL 7021 S	RAL 9016 S
<p><u>A discounter assembly 805/420 is composed of:</u> 1 bracket left, 1 bracket right, 1 base, 6 metallic dividers 420 mm</p> <p>Can be ordered separately:</p> <p>Dividers 420 mm Plexiglass front 795 x H. 120 mm 30-09-03-805 Façade plexi 795 x H. 120 mm 30-09-03-805</p>	30-109-42-805-7021-S	30-109-42-805-9016-S
<p>Discounter assembly mid-distance 905</p> <p><u>A discounter assembly 905/420 is composed of:</u> 1 bracket left, 1 bracket right, 1 base, 7 metallic dividers 420 mm</p> <p>Can be ordered separately:</p> <p>Dividers 420 mm Plexiglass front 645 x H. 120 mm 30-09-03-655</p>	30-109-42-905-7021-S	30-109-42-905-9016-S
<p>Discounter assembly mid-distance 1005</p> <p><u>A discounter assembly 1005/420 is composed of:</u> 1 bracket left, 1 bracket right, 1 base, 7 metallic dividers 420 mm</p> <p>Can be ordered separately:</p> <p>Dividers 420 mm Plexiglass front 995 x H. 120 mm 30-09-03-1005</p>	30-109-42-1005-7021-S	30-109-42-1005-9016-S
<p>Discounter assembly mid-distance 1105</p> <p><u>A discounter assembly 1105/420 is composed of:</u> 1 bracket left, 1 bracket right, 1 base, 7 metallic dividers 420 mm</p> <p>Can be ordered separately:</p> <p>Dividers 420 mm Plexiglass front 1095 x H. 120 mm 30-09-03-1105</p>	30-109-42-1105-7021-S	30-109-42-1105-9016-S



Vertical depth 270 mm - Height 230 mm

Sloping 30°

Included equipment:

- 1 Plexiglass front
- 1 price-holder support
- x dividers (depending on width, see classic counter)

RAL 7021 S	RAL 9016 S
30-59-27-588-7021-S	30-59-27-588-9016-S
30-59-27-655-7021-S	30-59-27-655-9016-S
30-59-27-705-7021-S	30-59-27-705-9016-S
30-59-27-755-7021-S	30-59-27-755-9016-S
30-59-27-805-7021-S	30-59-27-805-9016-S
30-59-27-905-7021-S	30-59-27-905-9016-S
30-59-27-1005-7021-S	30-59-27-1005-9016-S
30-59-27-1105-7021-S	30-59-27-1105-9016-S

 Maximum loading weight 30 kg



Vertical depth 370 mm - Height 230 mm

Sloping 30°

Included equipment:

- 1 Plexiglass front
- 1 price-holder support
- x dividers (depending on width, see classic discounter)

RAL 7021 S	RAL 9016 S
30-59-37-588-7021-S	30-59-37-588-9016-S
30-59-37-655-7021-S	30-59-37-655-9016-S
30-59-37-705-7021-S	30-59-37-705-9016-S
30-59-37-755-7021-S	30-59-37-755-9016-S
30-59-37-805-7021-S	30-59-37-805-9016-S
30-59-37-905-7021-S	30-59-37-905-9016-S
30-59-37-1005-7021-S	30-59-37-1005-9016-S
30-59-37-1105-7021-S	30-59-37-1105-9016-S

 Maximum loading weight 30 kg

Drawer units with curved handle

- Usefull depth 320 mm - Total depth 400 mm
- Complete metal casing + curved handle in matt nickel 288 c/c
- The units are placed on the base and hooked into the racks.



Height 305 mm

Total height from floor: 405 mm

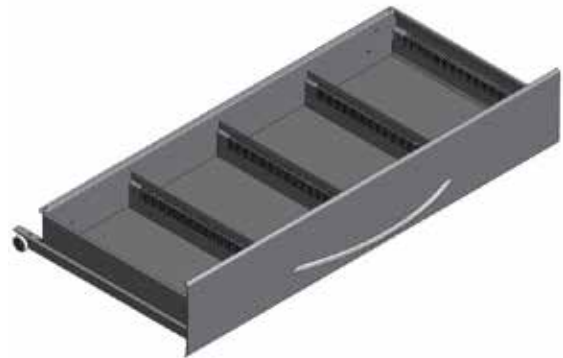
Unit with 2 single drawers

2 drawers H. 130 mm		Q. of div./drawer	RAL 7021 S	RAL 9016 S
c/c	Dim. of compartments			
588 mm	2 x 250 mm	6 dividers	30-10-40-2588-2-7021-S	30-10-40-2588-2-9016-S
655 mm	2 x 173,3 mm + 1 x 206,8 mm	7 dividers	30-10-40-2655-2-7021-S	30-10-40-2655-2-9016-S
705 mm	2 x 173,1 mm + 1 x 258 mm	9 dividers	30-10-40-2705-2-7021-S	30-10-40-2705-2-9016-S
755 mm	2 x 240 mm + 1 x 172 mm	10 dividers	30-10-40-2755-2-7021-S	30-10-40-2755-2-9016-S
805 mm	4 x 174 mm or 2 x 350 mm	12 dividers	30-10-40-2805-2-7021-S	30-10-40-2805-2-9016-S
905 mm	2 x 174 mm + 2 x 224 mm	15 dividers	30-10-40-2905-2-7021-S	30-10-40-2905-2-9016-S

Unit with 1 double drawer

1 drawer H. 260 mm		Q. of div./drawer	RAL 7021 S	RAL 9016 S
c/c	Dim. of compartments			
588 mm	2 x 250 mm	6 dividers	30-10-40-2588-1-7021-S	30-10-40-2588-1-9016-S
655 mm	2 x 173,3 mm + 1 x 206,8 mm	7 dividers	30-10-40-2655-1-7021-S	30-10-40-2655-1-9016-S
705 mm	2 x 173,1 mm + 1 x 258 mm	9 dividers	30-10-40-2705-1-7021-S	30-10-40-2705-1-9016-S
755 mm	2 x 240 mm + 1 x 172 mm	10 dividers	30-10-40-2755-1-7021-S	30-10-40-2755-1-9016-S
805 mm	4 x 174 mm or 2 x 350 mm	12 dividers	30-10-40-2805-1-7021-S	30-10-40-2805-1-9016-S
905 mm	2 x 174 mm + 2 x 224 mm	15 dividers	30-10-40-2905-1-7021-S	30-10-40-2905-1-9016-S

- Usefull depth 320 mm - Total depth 400 mm
- Complete metal casing + curved handle in matt nickel 288 c/c
- The units are placed on the base and hooked into the racks.



Height 445 mm

Total height from floor: 545 mm

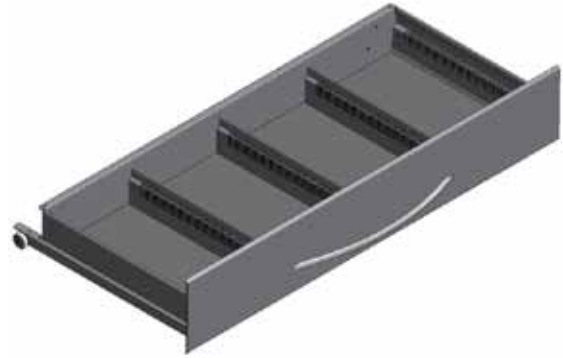
Unit with 3 single drawers

3 drawers H. 130 mm		Q. of div./drawer	RAL 7021 S	RAL 9016 S
c/c	Dim. of compartments			
588 mm	2 x 250 mm	6 dividers	30-10-40-3588-3-7021-S	30-10-40-3588-3-9016-S
655 mm	2 x 173,3 mm + 1 x 206,8 mm	7 dividers	30-10-40-3655-3-7021-S	30-10-40-3655-3-9016-S
705 mm	2 x 173,1 mm + 1 x 258 mm	9 dividers	30-10-40-3705-3-7021-S	30-10-40-3705-3-9016-S
755 mm	2 x 240 mm + 1 x 172 mm	10 dividers	30-10-40-3755-3-7021-S	30-10-40-3755-3-9016-S
805 mm	4 x 174 mm or 2 x 350 mm	12 dividers	30-10-40-3805-3-7021-S	30-10-40-3805-3-9016-S
905 mm	2 x 174 mm + 2 x 224 mm	15 dividers	30-10-40-3905-3-7021-S	30-10-40-3905-3-9016-S

Unit with 1 double drawer and 1 single drawer

1 drawer H. 260 mm + 1 drawer H. 130 mm		Q. of div./drawer	RAL 7021 S	RAL 9016 S
c/c	Dim. of compartments			
588 mm	2 x 250 mm	6 dividers	30-10-40-3588-2-7021-S	30-10-40-3588-2-9016-S
655 mm	2 x 173,3 mm + 1 x 206,8 mm	7 dividers	30-10-40-3655-2-7021-S	30-10-40-3655-2-9016-S
705 mm	2 x 173,1 mm + 1 x 258 mm	9 dividers	30-10-40-3705-2-7021-S	30-10-40-3705-2-9016-S
755 mm	2 x 240 mm + 1 x 172 mm	10 dividers	30-10-40-3755-2-7021-S	30-10-40-3755-2-9016-S
805 mm	4 x 174 mm or 2 x 350 mm	12 dividers	30-10-40-3805-2-7021-S	30-10-40-3805-2-9016-S
905 mm	2 x 174 mm + 2 x 224 mm	15 dividers	30-10-40-3905-2-7021-S	30-10-40-3905-2-9016-S

- Usefull depth 320 mm - Total depth 400 mm
- Complete metal casing + curved handle in matt nickel 288 c/c
- The units are placed on the base and hooked into the racks.



Height 585 mm

Total height from floor: 685 mm

Unit with 4 single drawers

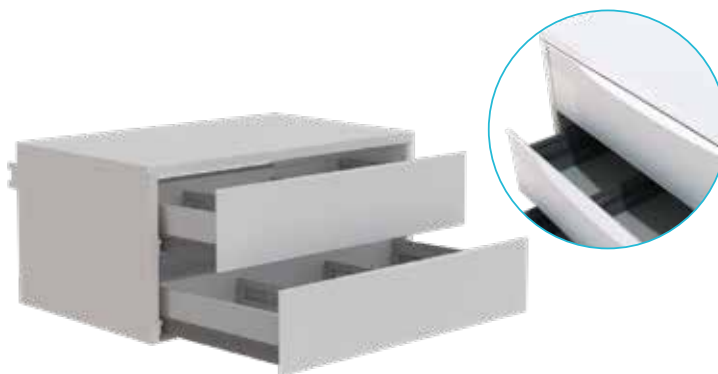
4 drawers H. 130 mm		Q. of div./drawer	RAL 7021 S	RAL 9016 S
c/c	Dim. of compartments			
588 mm	2 x 250 mm	6 dividers	30-10-40-4588-4-7021-S	30-10-40-4588-4-9016-S
655 mm	2 x 173,3 mm + 1 x 206,8 mm	7 dividers	30-10-40-4655-4-7021-S	30-10-40-4655-4-9016-S
705 mm	2 x 173,1 mm + 1 x 258 mm	9 dividers	30-10-40-4705-4-7021-S	30-10-40-4705-4-9016-S
755 mm	2 x 240 mm + 1 x 172 mm	10 dividers	30-10-40-4755-4-7021-S	30-10-40-4755-4-9016-S
805 mm	4 x 174 mm or 2 x 350 mm	12 dividers	30-10-40-4805-4-7021-S	30-10-40-4805-4-9016-S
905 mm	2 x 174 mm + 2 x 224 mm	15 dividers	30-10-40-4905-4-7021-S	30-10-40-4905-4-9016-S

Unit with 2 doubles drawers

2 drawers H. 260 mm		Q. of div./drawer	RAL 7021 S	RAL 9016 S
c/c	Dim. of compartments			
588 mm	2 x 250 mm	6 dividers	30-10-40-4588-2-7021-S	30-10-40-4588-2-9016-S
655 mm	2 x 173,3 mm + 1 x 206,8 mm	7 dividers	30-10-40-4655-2-7021-S	30-10-40-4655-2-9016-S
705 mm	2 x 173,1 mm + 1 x 258 mm	9 dividers	30-10-40-4705-2-7021-S	30-10-40-4705-2-9016-S
755 mm	2 x 240 mm + 1 x 172 mm	10 dividers	30-10-40-4755-2-7021-S	30-10-40-4755-2-9016-S
805 mm	4 x 174 mm or 2 x 350 mm	12 dividers	30-10-40-4805-2-7021-S	30-10-40-4805-2-9016-S
905 mm	2 x 174 mm + 2 x 224 mm	15 dividers	30-10-40-4905-2-7021-S	30-10-40-4905-2-9016-S

Drawer units with pull handle

- Useful depth 320 mm - Total depth 400 mm
- Complete metal cladding + front panel with integrated pull handle
- The units are placed on the base and hooked into the racks.



Height 350 mm

Total height from floor: 405 mm

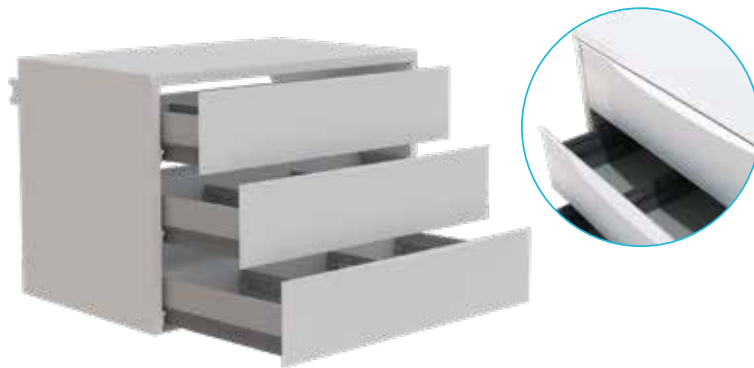
Unit with 2 single drawers

2 drawers H. 130 mm		Q. of div./drawer	RAL 7021 S	RAL 9016 S
c/c	Dim. of compartments			
588 mm	2 x 250 mm	6 dividers	30-15-40-2588-1-7021-S	30-15-40-2588-1-9016-S
655 mm	2 x 173,3 mm + 1 x 206,8 mm	7 dividers	30-15-40-2655-1-7021-S	30-15-40-2655-1-9016-S
705 mm	2 x 173,1 mm + 1 x 258 mm	9 dividers	30-15-40-2705-1-7021-S	30-15-40-2705-1-9016-S
755 mm	2 x 240 mm + 1 x 172 mm	10 dividers	30-15-40-2755-1-7021-S	30-15-40-2755-1-9016-S
805 mm	4 x 174 mm or 2 x 350 mm	12 dividers	30-15-40-2805-1-7021-S	30-15-40-2805-1-9016-S
905 mm	2 x 174 mm + 2 x 224 mm	15 dividers	30-15-40-2905-1-7021-S	30-15-40-2905-1-9016-S

Unit with 1 double drawer

1 drawers H. 260 mm		Q. of div./drawer	RAL 7021 S	RAL 9016 S
c/c	Dim. of compartments			
588 mm	2 x 250 mm	6 dividers	30-15-40-2588-2-7021-S	30-15-40-2588-2-9016-S
655 mm	2 x 173,3 mm + 1 x 206,8 mm	7 dividers	30-15-40-2655-2-7021-S	30-15-40-2655-2-9016-S
705 mm	2 x 173,1 mm + 1 x 258 mm	9 dividers	30-15-40-2705-2-7021-S	30-15-40-2705-2-9016-S
755 mm	2 x 240 mm + 1 x 172 mm	10 dividers	30-15-40-2755-2-7021-S	30-15-40-2755-2-9016-S
805 mm	4 x 174 mm or 2 x 350 mm	12 dividers	30-15-40-2805-2-7021-S	30-15-40-2805-2-9016-S
905 mm	2 x 174 mm + 2 x 224 mm	15 dividers	30-15-40-2905-2-7021-S	30-15-40-2905-2-9016-S

- Usefull depth 320 mm - Total depth 400 mm
- Complete metal cladding + front panel with integrated pull handle
- The units are placed on the base and hooked into the racks.



Height 445 mm

Total height from floor: 545 mm

Unit with 3 single drawers

3 drawers H. 130 mm		Q. of div./drawer	RAL 7021 S	RAL 9016 S
c/c	Dim. of compartments			
588 mm	2 x 250 mm	6 dividers	30-15-40-3588-2-7021-S	30-15-40-3588-2-9016-S
655 mm	2 x 173,3 mm + 1 x 206,8 mm	7 dividers	30-15-40-3655-2-7021-S	30-15-40-3655-2-9016-S
705 mm	2 x 173,1 mm + 1 x 258 mm	9 dividers	30-15-40-3705-2-7021-S	30-15-40-3705-2-9016-S
755 mm	2 x 240 mm + 1 x 172 mm	10 dividers	30-15-40-3755-2-7021-S	30-15-40-3755-2-9016-S
805 mm	4 x 174 mm or 2 x 350 mm	12 dividers	30-15-40-3805-2-7021-S	30-15-40-3805-2-9016-S
905 mm	2 x 174 mm + 2 x 224 mm	15 dividers	30-15-40-3905-2-7021-S	30-15-40-3905-2-9016-S

Unit with 1 double drawers et 1 single drawer

1 drawer H. 260 mm + 1 drawer H. 130 mm		Q. of div./drawer	RAL 7021 S	RAL 9016 S
c/c	Dim. of compartments			
588 mm	2 x 250 mm	6 dividers	30-15-40-3588-3-7021-S	30-15-40-3588-3-9016-S
655 mm	2 x 173,3 mm + 1 x 206,8 mm	7 dividers	30-15-40-3655-3-7021-S	30-15-40-3655-3-9016-S
705 mm	2 x 173,1 mm + 1 x 258 mm	9 dividers	30-15-40-3705-3-7021-S	30-15-40-3705-3-9016-S
755 mm	2 x 240 mm + 1 x 172 mm	10 dividers	30-15-40-3755-3-7021-S	30-15-40-3755-3-9016-S
805 mm	4 x 174 mm or 2 x 350 mm	12 dividers	30-15-40-3805-3-7021-S	30-15-40-3805-3-9016-S
905 mm	2 x 174 mm + 2 x 224 mm	15 dividers	30-15-40-3905-3-7021-S	30-15-40-3905-3-9016-S

- Usefull depth 320 mm - Total depth 400 mm
- Complete metal cladding + front panel with integrated pull handle
- The units are placed on the base and hooked into the racks.



Height 585 mm

Total height from floor: 685 mm

Unit with 4 single drawers

4 drawers H. 130 mm		Q. of div./drawer	RAL 7021 S	RAL 9016 S
c/c	Dim. of compartments			
588 mm	2 x 250 mm	6 dividers	30-15-40-4588-4-7021-S	30-15-40-4588-4-9016-S
655 mm	2 x 173,3 mm + 1 x 206,8 mm	7 dividers	30-15-40-4655-4-7021-S	30-15-40-4655-4-9016-S
705 mm	2 x 173,1 mm + 1 x 258 mm	9 dividers	30-15-40-4705-4-7021-S	30-15-40-4705-4-9016-S
755 mm	2 x 240 mm + 1 x 172 mm	10 dividers	30-15-40-4755-4-7021-S	30-15-40-4755-4-9016-S
805 mm	4 x 174 mm or 2 x 350 mm	12 dividers	30-15-40-4805-4-7021-S	30-15-40-4805-4-9016-S
905 mm	2 x 174 mm + 2 x 224 mm	15 dividers	30-15-40-4905-4-7021-S	30-15-40-4905-4-9016-S

Unit with 2 drawers doubles

2 drawers H. 260 mm		Q. of div./drawer	RAL 7021 S	RAL 9016 S
c/c	Dim. of compartments			
588 mm	2 x 250 mm	6 dividers	30-15-40-4588-2-7021-S	30-15-40-4588-2-9016-S
655 mm	2 x 173,3 mm + 1 x 206,8 mm	7 dividers	30-15-40-4655-2-7021-S	30-15-40-4655-2-9016-S
705 mm	2 x 173,1 mm + 1 x 258 mm	9 dividers	30-15-40-4705-2-7021-S	30-15-40-4705-2-9016-S
755 mm	2 x 240 mm + 1 x 172 mm	10 dividers	30-15-40-4755-2-7021-S	30-15-40-4755-2-9016-S
805 mm	4 x 174 mm or 2 x 350 mm	12 dividers	30-15-40-4805-2-7021-S	30-15-40-4805-2-9016-S
905 mm	2 x 174 mm + 2 x 224 mm	15 dividers	30-15-40-4905-2-7021-S	30-15-40-4905-2-9016-S

Unit with 1 double drawers and 2 single drawers

1 drawer H. 260 mm + 2 drawers H. 130 mm		Q. of div./drawer	RAL 7021 S	RAL 9016 S
c/c	Dim. of compartments			
588 mm	2 x 250 mm	6 dividers	30-15-40-4588-3-7021-S	30-15-40-4588-3-9016-S
655 mm	2 x 173,3 mm + 1 x 206,8 mm	7 dividers	30-15-40-4655-3-7021-S	30-15-40-4655-3-9016-S
705 mm	2 x 173,1 mm + 1 x 258 mm	9 dividers	30-15-40-4705-3-7021-S	30-15-40-4705-3-9016-S
755 mm	2 x 240 mm + 1 x 172 mm	10 dividers	30-15-40-4755-3-7021-S	30-15-40-4755-3-9016-S
805 mm	4 x 174 mm or 2 x 350 mm	12 dividers	30-15-40-4805-3-7021-S	30-15-40-4805-3-9016-S
905 mm	2 x 174 mm + 2 x 224 mm	15 dividers	30-15-40-4905-3-7021-S	30-15-40-4905-3-9016-S

- Complete metal casing + curved handle in matt nickel 288 c/c
- The units are placed on the base and hooked into the racks.



Unit drawers with greater depth

	RAL 7021 S	RAL 9016 S
2 drawers H. 260 mm	30-10-59-4805-2-705-7021-S	30-10-59-4805-2-705-9016-S
Usefull depth 520 mm	30-10-59-4905-2-805-7021-S	30-10-59-4905-2-805-9016-S
3 drawers H. 260 mm	30-10-59-6805-3-805-7021-S	30-10-59-6805-3-805-9016-S
Usefull depth 520 mm	30-10-59-6905-3-805-7021-S	30-10-59-6905-3-805-9016-S
4 drawers H. 130 mm	30-10-49-4805-4-705-7021-S	30-10-49-4805-4-705-9016-S
Usefull depth 520 mm	30-10-59-4805-4-755-7021-S	30-10-59-4805-4-755-9016-S
	30-10-59-4905-4-805-7021-S	30-10-59-4905-4-805-9016-S
6 drawers H. 130 mm	30-10-49-6805-6-755-7021-S	30-10-49-6805-6-755-9016-S
Usefull depth 520 mm	30-10-59-6805-6-805-7021-S	30-10-59-6805-6-805-9016-S
	30-10-59-6905-6-805-7021-S	30-10-59-6905-6-805-9016-S

Option with 2 fronts: curved handle or pull handle

Cabinet with doors

400 mm height + 100 mm base

Total height: 500 mm

1 metal shelf included



c/c	Dim. tablettes	Inside dimensions	RAL 7021 S	RAL 9016 S
			30-90-40-3588-2-7021-S	30-90-40-3588-2-9016-S
588 mm	D.366 x W. 546 mm	D.366 x W. 546 mm	30-90-40-3655-2-7021-S	30-90-40-3655-2-9016-S
655 mm	D.366 x W. 612 mm	D.366 x W. 612 mm	30-90-40-3705-2-7021-S	30-90-40-3705-2-9016-S
705 mm	D.366 x W. 663 mm	D.366 x W. 663 mm	30-90-40-3755-2-7021-S	30-90-40-3755-2-9016-S
755 mm	D.366 x W. 712 mm	D.366 x W. 712 mm	30-90-40-3805-2-7021-S	30-90-40-3855-2-9016-S
805 mm	D.366 x W. 763 mm	D.366 x W. 763 mm	30-90-40-3905-2-7021-S	30-90-40-3905-2-9016-S
905 mm	D.366 x W. 863 mm	D.366 x W. 863 mm	30-90-40-31005-2-7021-S	30-90-40-31005-2-9016-S
1005 mm	D.366 x W. 963 mm	D.366 x W. 963 mm		



All information in this catalogue is not binding and may be changed at any time. The products are supplied in a suitable packaging according to the transport standards and adapted to the order.

H-Pharma reserves the right to change technical aspects of the product without notice to the customer and the company's terms and conditions always apply. No part of this catalogue may be copied without written and signed permission from Huwil.



H - P H A R M A

Your Partner in Pharmacy Equipment

H-Pharma Medical Storage • Am Dueref 48-2, L-9645 Derenbach • Luxembourg
Tel: +32 51 62 21 01 • info@hpharma.eu • www.hpharma.eu

