

# Accessories

Catalogue Accessories 10-2023



o  
m  
r  
o  
n  
p  
-  
H

Accessories

# Summary

## Part 1: Price labels

- Price label W for metal shelves Compact-H	6
- Price label metal shelves Easy-H and wood shelves	6
- Price label for Easy-H balancing bin	6
- Price label for with magnetic fixing	6
- Price label F for glass shelves	7
- Dividers to snap-off	7
- Support rail for dividers	7
- Price label « F » for glass shelves + integrated support rail	7
- Price label for glass shelf 8 mm	7
- Price label paper « U » for wooden shelves groove	7
- Price label paper upright « I » for wooden shelves groove	7
- Price label paper magnetic	7

## Part 2: C-Paper

- C-Paper frame	8
- Clips for glass shelf 6 - 10 mm	8
- U-grip for groove shelf	8
- Sloping holder	8
- Presentation support	9
- Holder for steel shelf	9
- Holder for timber shelf	9
- C-Paper labels	9

## Part 3: Brackets and accessory holders

- Brackets for glass shelves 8 mm	10
- Inverted brackets for 8mm glass shelves	10
- Brackets « Non-Stop »	10
- Aluminium bracket profile	10
- Bracket frames for 8 mm glass shelves	11
- Bracket for wooden shelf	11
- Inverted brackets for wooden shelves	11
- Metal shelf brackets Compact-H	12
- Metal shelf brackets Easy-H	12
- Median bracket	12
- Stainless steel bracket	12
- Purse carrier	13
- Feature product holder	13
- Display shelf	13
- Presentation tray	13
- 2-step presentation tray	13
- Inclined display tray for A4 documents	14
- Inclined shoe rack	14

- Cane holder with upper support	14
- Cane holder with lower support	14
- Console for presentation tray	15
- Round presentation plate	15
- Square presentation plate	15
- Fixing bracket for 30/30 mm tube	15
- Customisable computer cover with magnetic communication	16
- Display shelf for counter	16
- Grooved counter top panel	17
- Double hooks for hanging products	18
- Single hooks for hanging products	18
- PVC Price labels for hooks	18
- Charging bar for multi-hooks	18
- Reversed multi hooks charging bar	18
- H-Pharma glasses holder	19
- Mirror for H-Pharma glasses holder	19
- H-Pharma individual glasses holder	19

#### Part 4: Signage and merchandising

- Magnetic visual communication panel	20
- Magnetic advertising canopy	21
- Communication canopy panel to hang on Pharmalight furniture	22
- Reversible communication canopy for Pharmalight furniture	22
- Magnetic sign holder for Pharmalight furniture	23
- Magnetic sign holder, lateral suspension for Pharmalight furniture	23
- Magnetic EDGE sign holder for affixing to a gondola	23
- Plexiglass bin (big model)	24
- Plexiglass bin (small model)	24
- Leaflet holders	24
- Display holder for window "guard sheet"	25
- Non-perforated acrylic sleeve	25
- Clip porte-affichette pour vasque promotionnelle	25

#### Part 5: Fixing and stabilisation support

- Hooks for wooden back panel	26
- Hooks P. 35	26
- Hooks P. 70	26
- Hooks Z 35 mm for panel 18 mm	26
- Connection lead for Pharmalight	26

- Fixing bracket for wooden panel and connecting bar	27
- Support for Pharmalight bracket	27
- Wall/ceiling mounting insert 30/30	27
- Wall/ceiling mounting insert for 30/60 tube	27
- Ceiling jack 30/30 M10	27
- Mounting brackets	28
- Extension profile for 30/60 tube - L. 100 mm	28
- Extension part 30/60 - H. 200 mm	28
- Rotating castor	28
- Rotating castor with brake	28
- Table feet	29
- 1/2 table frame	29
- Square foot 60 mm 30/30	29

## Part 6: Presentation furniture

- Promotional display unit	30
- Promotional display unit in wood	31
- Reversible plexiglass disposer bin	31
- Presentation cube 540 / 790 / 1080 mm	32
- Tripods 450 / 550 / 650 / 750 mm	33
- Pharmaslim 20/20 open frame	34
- Presentation stand « Rhombus »	35
- Tourniquet	36

## Part 9: Podiums

- Clear acryl podiums (2 levels)	37
- Clear acryl podiums (3 levels)	37

## Part 8: Various

- Mobile 2-drawers unit	38
- Mobile 3-drawers unit	38
- Keyboard of completed preparations	39
- Cashier's tray	39
- Cash drawer	39
- Ointment plate	39

# Part 1: Price labels

## Clear PVC datastrip for paper labels

### Price label W for metal shelves Compact-H

Paper size: 26 to 30 mm

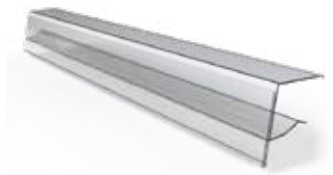


574 x H. 30 mm	50-04-010-588
641 x H. 30 mm	50-04-010-655
691 x H. 30 mm	50-04-010-705
741 x H.30 mm	50-04-010-755
791 x H. 30 mm	50-04-010-805
891 x H. 30 mm	50-04-010-905

### Price label metal shelves Easy-H and wood shelves

Paper size: 26 to 30 mm

Metal shelf



575 x H. 30 mm	50-04-019-588
642 x H. 30 mm	50-04-019-655
692 x H. 30 mm	50-04-019-705
742 x H. 30 mm	50-04-019-755
792 x H. 30 mm	50-04-019-805
892 x H. 30 mm	50-04-019-905
992 x H. 30 mm	50-04-019-1005
1092 x H. 30 mm	50-04-019-1105

Wood shelf,  
thickness 18 to 22 mm

Length 45 mm	50-04-019-45
Length 2500 mm	50-04-019-2500

### Price-holder profile for Easy-H balancing bin

Paper size: 26 à 30 mm



543 x H. 30 mm	50-04-009-588
610 x H. 30 mm	50-04-009-655
660 x H. 30 mm	50-04-009-705
710 x H. 30 mm	50-04-009-755
760 x H. 30 mm	50-04-009-805
860 x H. 30 mm	50-04-009-905
960 x H. 30 mm	50-04-009-1005
1060 x H. 30 mm	50-04-009-1105

### Price-holder profile with magnetic fixing

Paper size: 26 à 30 mm

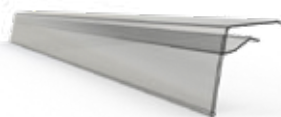


543 x H. 30 mm	50-04-109-588
610 x H. 30 mm	50-04-109-655
660 x H. 30 mm	50-04-109-705
710 x H. 30 mm	50-04-109-755
760 x H. 30 mm	50-04-109-805
860 x H. 30 mm	50-04-109-905
960 x H. 30 mm	50-04-109-1005
1060 x H. 30 mm	50-04-109-1105

*On request, cutting can be done in the factory.*

## Price label F for glass shelves

Paper size: 26 à 30 mm



579 x H. 30 mm	50-04-015-588
646 x H. 30 mm	50-04-015-655
696 x H. 30 mm	50-04-015-705
746 x H. 30 mm	50-04-015-755
796 x H. 30 mm	50-04-015-805
896 x H. 30 mm	50-04-015-905
998 x H. 35 mm	50-04-015-1005

*On request, cutting can be done in the factory.*

## Dividers to snap-off



Plexiglas dividers (4 sections) 250 x H. 25 mm	50-01-026
---	-----------

## Support rail for dividers



Self-sticking rail to hold the dividers to snap-off	
579 x L. 13 mm	50-04-013-588
696 x L. 13 mm	50-04-013-705
796 x L. 13 mm	50-04-013-805
896 x L. 13 mm	50-04-013-905

## Price label « F » for glass shelves + integrated support rail



579 x H. 30 mm	50-04-016-588
646 x H. 30 mm	50-04-016-655
696 x H. 30 mm	50-04-016-705
746 x H. 30 mm	50-04-016-755
796 x H. 30 mm	50-04-016-805
896 x H. 30 mm	50-04-016-905

## Price label holder for glass shelf 8 mm



50 x H. 35 mm	50-04-015-050
---------------	---------------

## Price label paper « U » for wooden shelves groove



U-shaped PVC profile to be fixed in a wooden shelf groove located 18-20 mm from the shelf surface.	
50 x H. 34,8 mm	50-04-030-02-50

## Price label paper upright « I » for wooden shelves groove



Vertical PVC profile for integration into a wooden shelf groove.	
50 x H. 35 mm	50-04-030-04-50

## Price label paper magnetic



Ideal for the H-Pharma metal frame brackets (ref: 60-10.03-25/30-axes) and metal drawer front panels.	
50 x H. 26 mm	50-04-027-50

# Part 2: C-Paper

## C-Paper frame



Aluminium frame for price labels

Silver	89-01-44
Red	89-02-44
Black	89-03-44



Outside measures	H. 34 x L. 52 mm
Paper size	H. 27 x L. 44 mm
Window measures	H. 26 x L. 43 mm



### Half-frames

Silver	89-04-44
Black	89-05-44
Red	89-06-44

Outside measures	H. 34 x L. 30 mm
Paper size	H. 27 x L. 22 mm
Window measures	H. 26 x L. 21 mm

## Clips for glass shelf 6 - 10 mm



Stainless steel		
Dimensions	H. 11 x W. 21 mm	89-10-44

## U-grip for groove shelf



U-grip to insert into a groove. Dimension from the edge: 20 mm

Acier inoxydable	H. 30 x P. 18 mm	89-11-44
Black	H. 30 x P. 18 mm	89-13-44

## Sloping holder



To show price on any unit (counters, shelves,...)

Stainless steel	H. 34 x L. 52 mm	89-12-44
Stainless steel	H. 34 x L. 30 mm	89-14-44



## Presentation support

### Foot for C-Paper



Foot

H. 170 x Ø 90 mm

89-15-44

### Holder for steel shelf



Magnetic stainless steel part with support edge

89-16-44

### Holder for timber shelf



Self-sticking PVC part for wooden shelf

Shelf thickness 18-20 mm

89-17-44

### C-Paper labels



Paper label 44 x 27 mm 40 pcs./A4

150 pre-punched pages

89-20-44



Paper label 42 x 37 mm

Red card with "Promo" written on

89-21-44



Paper label 22 x 27 mm 80 pcs./A4

150 pre-punched pages

89-22-44



Paper label 20 x 37 mm


Red card with "Promo" written on

89-23-44


# Parties 3: Brackets and accessory holders

## Brackets for glass shelves




### Brackets for glass shelves 8 mm

Pitch 35		RAL 7021 S	RAL 9016 S
	Right	60-10.01-01-7021-S	60-10.01-01-9016-S
	Left	60-10.02-01-7021-S	60-10.02-01-9016-S

### Inverted brackets for 8 mm glass shelves

Pitch 35		RAL 7021 S	RAL 9016 S
	Right	60-10.01-15-25-7021-S	60-10.01-15-25-9016-S
	Left	60-10.02-15-25-7021-S	60-10.02-15-25-9016-S

### Brackets « Non-Stop »

Pitch 35		RAL 7021 S	RAL 9016 S	
    	Dim. shelves			
	180 à 245 mm	Right	60-10.01-18-7021-S	60-10.01-18-9016-S
		Left	60-10.02-18-7021-S	60-10.02-18-9016-S
	250 à 345 mm	Right	60-10.01-25-7021-S	60-10.01-25-9016-S
		Left	60-10.02-25-7021-S	60-10.02-25-9016-S
	350 à 445 mm	Right	60-10.01-35-7021-S	60-10.01-35-9016-S
		Left	60-10.02-35-7021-S	60-10.02-35-9016-S
	450 à 545 mm	Right	60-10.01-45-7021-S	60-10.01-45-9016-S
		Left	60-10.02-45-7021-S	60-10.02-45-9016-S
	550 à 645 mm	Right	60-10.01-55-7021-S	60-10.01-55-9016-S
		Left	60-10.02-55-7021-S	60-10.02-55-9016-S

### Aluminium bracket profile

Aluminium profile for 8 mm glass shelf

To slide into a slot wall 10 mm

	588 mm	60-10-588
	655 mm	60-10-655
	705 mm	60-10-705
	755 mm	60-10-755
	805 mm	60-10-805
	905 mm	60-10-905

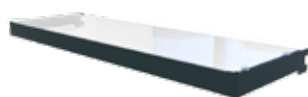
*On request, cutting in the warehouse is possible*

 Maximum loading weight 30 kg

Possibility to put a price label on the shelves see part 1: Price labels

## Bracket frames for 8 mm glass shelves

Depth 250 mm and 300 mm / Thickness 40 mm



Pitch 35		RAL 7021 S	RAL 9016 S
250 mm	588 mm	60-10.03-25-588-7021-S	60-10.03-25-588-9016-S
	655 mm	60-10.03-25-655-7021-S	60-10.03-25-655-9016-S
	705 mm	60-10.03-25-705-7021-S	60-10.03-25-705-9016-S
	755 mm	60-10.03-25-755-7021-S	60-10.03-25-755-9016-S
	805 mm	60-10.03-25-805-7021-S	60-10.03-25-805-9016-S
	905 mm	60-10.03-25-905-7021-S	60-10.03-25-905-9016-S
	1005 mm	60-10.03-25-1005-7021-S	60-10.03-25-1005-9016-S
	1105 mm	60-10.03-25-1105-7021-S	60-10.03-25-1105-9016-S
300 mm	588 mm	60-10.03-30-588-7021-S	60-10.03-30-588-9016-S
	655 mm	60-10.03-30-655-7021-S	60-10.03-30-655-9016-S
	705 mm	60-10.03-30-705-7021-S	60-10.03-30-705-9016-S
	755 mm	60-10.03-30-755-7021-S	60-10.03-30-755-9016-S
	805 mm	60-10.03-30-805-7021-S	60-10.03-30-805-9016-S
	905 mm	60-10.03-30-905-7021-S	60-10.03-30-905-9016-S
	1005 mm	60-10.03-30-1005-7021-S	60-10.03-30-1005-9016-S
	1105 mm	60-10.03-30-1105-7021-S	60-10.03-30-1105-9016-S

## Bracket for wooden shelf



Pitch 35		RAL 7021 S	RAL 9016 S
L. 165 mm	Right	60-15.01-01-7021-S	60-15.01-01-9016-S
	Left	60-15.02-01-7021-S	60-15.02-01-9016-S
L. 265 mm	Right	60-15.01-02-7021-S	60-15.01-02-9016-S
	Left	60-15.02-02-7021-S	60-15.02-02-9016-S

## Inverted brackets for wooden shelves




	RAL 7021 S	RAL 9016 S
Right	60-15.01-20-7021-S	60-15.01-20-9016-S
Left	60-15.02-20-7021-S	60-15.02-20-9016-S




Maximum loading weight 30 kg

Possibility to put a price label on the shelves see part 1: Price labels

### Metal shelf brackets Compact-H

	<b>Pitch 35</b>	<b>RAL 7021 S</b>	<b>RAL 9016 S</b>
	<b>Length</b>	Right / Left	Right / Left
	L. 150 mm	30-06-15-035-7021-S	30-06-15-035-9016-S
	L. 250 mm	30-06-25-035-7021-S	30-06-25-035-9016-S
	L. 300 mm	30-06-30-035-7021-S	30-06-30-035-9016-S
	L. 400 mm	30-06-40-035-7021-S	30-06-40-035-9016-S
	L. 500 mm *	30-06-50-035-7021-S	30-06-50-035-9016-S
L. 600 mm *	30-06-60-035-7021-S	30-06-60-035-9016-S	


### Metal shelf brackets Easy-H

	<b>Pitch 35</b>	<b>RAL 7021 S</b>	<b>RAL 9016 S</b>
	<b>Length</b>	Right / Left	Right / Left
	L. 250 mm	30-106-25-035-7021-S	30-106-25-035-9016-S
	L. 300 mm	30-106-30-035-7021-S	30-106-30-035-9016-S
	L. 400 mm	30-106-40-035-7021-S	30-106-40-035-9016-S
L. 500 mm *	30-106-50-035-7021-S	30-106-50-035-9016-S	

### Median bracket

	Bracket P. 35 for intermediary attachment		
	<b>D. 250 x W. 20 x H. 80 mm</b>	<b>RAL 7021 S</b>	<b>RAL 9016 S</b>
	60-10.03-05-7021-S	60-10.03-05-9016-S	
	Recommended for glass shelves 250 to 400 mm		
	Max. overhang 75 mm on each side		
	Bracket for Pharma Frame 31-01-865-1300 (Pharmalight range)		

### Stainless steel bracket

	Bracket for glass shelf D. 250 mm	
	Must be security mounted through an adequate back panel	
Ø 15 mm L. 225 mm		60-11-01

## Purse carrier

To fix into a counter



H. 40 x L. 340 x P. 140 mm

Perforation size:  
240 mm a/a

**RAL 7021 S**

30-23-02-7021-S

**RAL 9016 S**

30-23-02-9016-S

## Feature product holder

To highlight a specific product

The attachment of this unit must be 45 mm max



H. 350 x L. 200 x I. 200 mm

**RAL 7021 S**

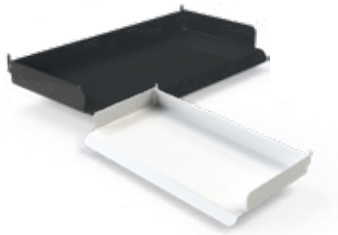
30-23-01-7021-S

**RAL 9016 S**

30-23-01-9016-S

## Display shelf

Shelf to be fixed in a rack (centre distance 366.5 mm)



D. 160 x L. 365 mm

**RAL 7021 S**

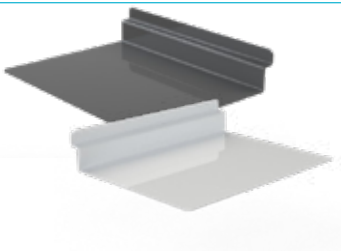
30-23-03-7021-S

**RAL 9016 S**

30-23-03-9016-S

## Presentation tray

Can be integrated into a charging bar or grooved panel



L. 200 x P. 150 mm

**RAL 7021 S**

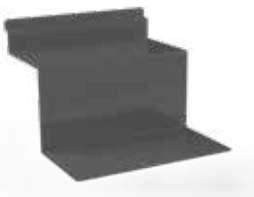
60-05-03-7021-S

**RAL 9016 S**

60-05-03-9016-S

## 2-step presentation tray

Can be integrated into a charging bar or grooved panel



2 x L. 200 x P. 100 mm

**RAL 7021 S**

60-05-04-7021-S

**RAL 9016 S**

60-05-04-9016-S

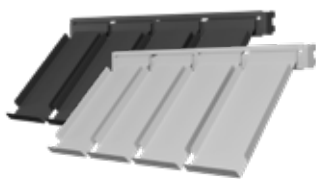
### Inclined display tray for A4 documents



Can be integrated into a charging bar or grooved panel

	<b>RAL 7021 S</b>	<b>RAL 9016 S</b>
L. 297 x l. 210 mm x (45°)	60-05-05-7021-S	60-05-05-9016-S

### Inclined shoe rack

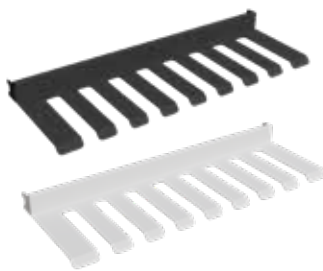


Can be integrated into a charging bar or grooved panel

	<b>RAL 7021 S</b>	<b>RAL 9016 S</b>
L. 340 x l. 141 mm x (45°)	60-05-05-340-14-7021-S	60-05-05-340-14-9016-S

### Cane holder with upper support

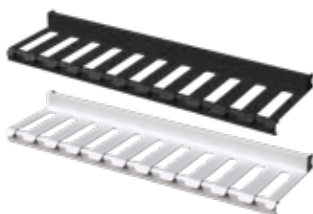
Can be integrated into a charging bar or grooved panel



	<b>RAL 7021 S</b>	<b>RAL 9016 S</b>
L. 588 x l. 96 mm	30-11-22-588-7021-S	30-11-22-588-9016-S
L. 655 x l. 96 mm	30-11-22-655-7021-S	30-11-22-655-9016-S
L. 705 x l. 96 mm	30-11-22-705-7021-S	30-11-22-705-9016-S
L. 755 x l. 96 mm	30-11-22-755-7021-S	30-11-22-755-9016-S
L. 805 x l. 96 mm	30-11-22-805-7021-S	30-11-22-805-9016-S
L. 905 x l. 96 mm	30-11-22-905-7021-S	30-11-22-905-9016-S
L. 1005 x l. 96 mm	30-11-22-1005-7021-S	30-11-22-1005-9016-S
L. 1105 x l. 96 mm	30-11-22-1105-7021-S	30-11-22-1105-9016-S

### Cane holder with lower support

Can be integrated into a charging bar or grooved panel



	<b>RAL 7021 S</b>	<b>RAL 9016 S</b>
L. 588 x l. 96 mm	30-11-22-02-588-7021-S	30-11-22-02-588-9016-S
L. 655 x l. 96 mm	30-11-22-02-655-7021-S	30-11-22-02-655-9016-S
L. 705 x l. 96 mm	30-11-22-02-705-7021-S	30-11-22-02-705-9016-S
L. 755 x l. 96 mm	30-11-22-02-55-7021-S	30-11-22-02-755-9016-S
L. 805 x l. 96 mm	30-11-22-02-805-7021-S	30-11-22-02-805-9016-S
L. 905 x l. 96 mm	30-11-22-02-905-7021-S	30-11-22-02-905-9016-S
L. 1005 x l. 96 mm	30-11-22-02-1005-7021-S	30-11-22-02-1005-9016-S
L. 1105 x l. 96 mm	30-11-22-02-1105-7021-S	30-11-22-02-1105-9016-S

### Console for presentation tray

To be fixed on a tube 30/30 H-Pharma



**RAL 7021 S**

**RAL 9016 S**

60-15.01-250-3030-180°-7021-S

60-15.01-250-3030-180°-9016-S

To be fixed on a tube 30/60 H-Pharma



**RAL 7021 S**

**RAL 9016 S**

60-15.01-250-6030-180°-7021-S

60-15.01-250-6030-180°-9016-S

To be fixed on a tube 30/30 H-Pharma unpunched



**RAL 7021 S**

**RAL 9016 S**

60-15-06.02-250-3030-180°-7021-S

60-15-06.02-250-3030-180°-9016-S

### Round presentation plate



**Diameters**

**RAL 7021 S**

**RAL 9016 S**

200 mm

60-15-200-7021-S

60-15-200-9016-S

250 mm

60-15-250-7021-S

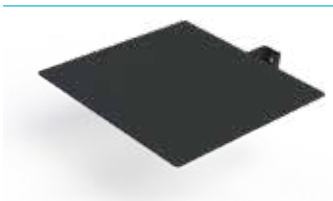
60-15-250-9016-S

300 mm

60-15-300-7021-S

60-15-300-9016-S

### Square presentation plate



**Dimensions**

**RAL 7021 S**

**RAL 9016 S**

200 x 200 mm

60-15-200-200-7021-S

60-15-200-200-9016-S

250 x 250 mm

60-15-250-250-7021-S

60-15-250-250-9016-S

300 x 300 mm

60-15-300-300-7021-S

60-15-300-300-9016-S

Application:



### Fixing bracket for 30/30 mm tube

With 6 mm perforation

For use with multi-blade accessories

(e.g. double or single hooks, individual pen holders, etc.)



**RAL 7021 S**

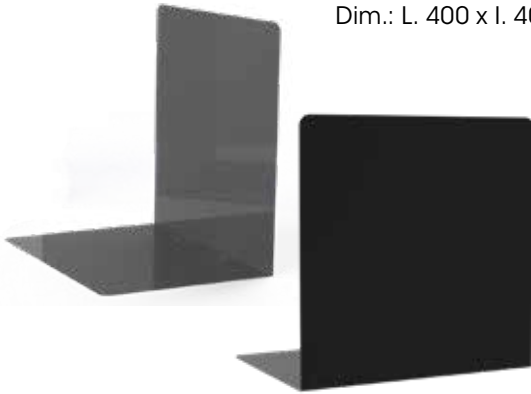
**RAL 9016 S**

60-15.01-120-3030-7021-S

60-15.01-120-3030-9016-S

### Customisable computer cover with magnetic communication

Dim.: L. 400 x l. 400 x P. 300 mm



**RAL 7021 S**

30-23-21-7021-S

**RAL 9016 S**

30-23-21-9016-S

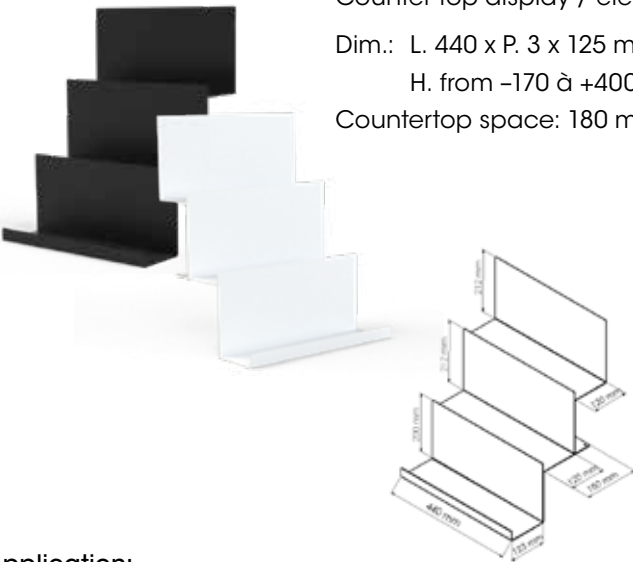
### Display shelf for counter

Counter top display / element to be placed on your counter

Dim.: L. 440 x P. 3 x 125 mm

H. from -170 à +400 mm

Countertop space: 180 mm



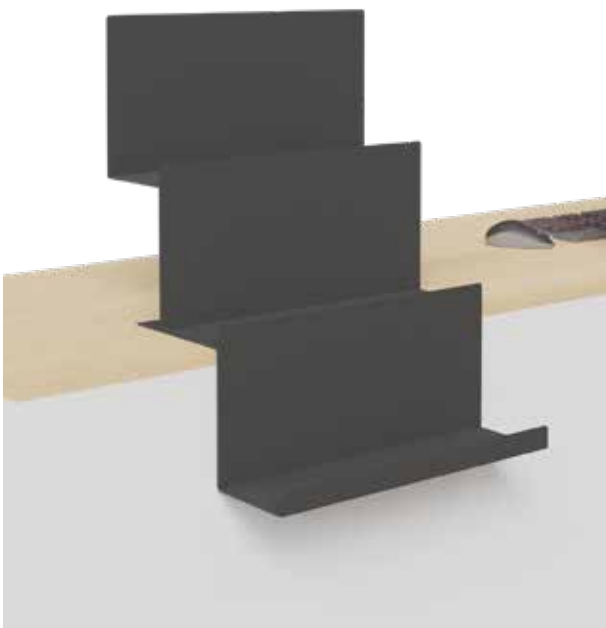
**RAL 7021 S**

30-23-10-7021-S

**RAL 9016 S**

30-23-10-9016-S

Application:





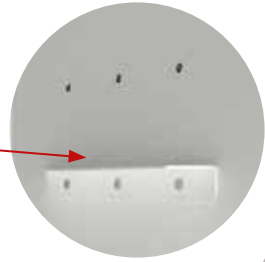
## Grooved counter top panel

Dim.: L. 500 x H. 600 x thickness 40 mm

Dim.: L. 500 x H. 1150 x thickness 40 mm

- Grooves every 100 mm
- Groove width: 470 mm (2 A4 document holders)
- Adjustable mounting profile (detail A)
- Overhang over counter: 300 or 400 mm (detail B)
- 2 jacks at the bottom for adjusting the panel's height

Detail A



Detail B



**RAL 7021 S**

**RAL 9016 S**

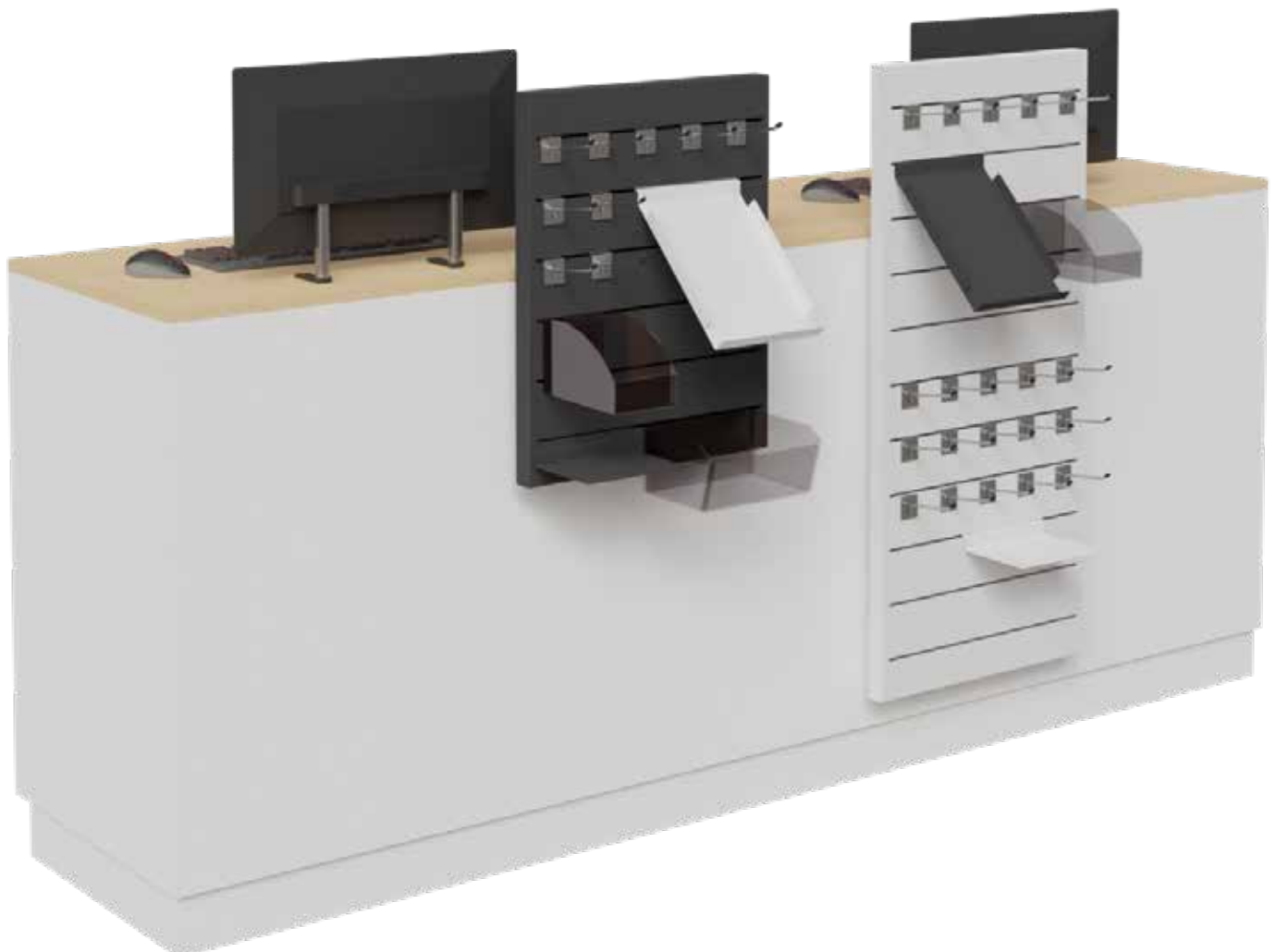
30-20-40-500-600-7021-S

30-20-40-500-600-9016-S

30-20-40-500-1150-7021-S

30-20-40-500-1150-9016-S

Application:



### Double hooks for hanging products



Chrome hooks to insert into a slat wall or a H-Pharma multi-hooks holder

Sold by 100 pcs

P. 120 mm double hooks

P. 200 mm double hooks

**CHROME**

60-01-01

60-02-01

**RAL 9005 S**

**RAL 9016 S**

P. 200 mm double crochet

60-02-02-9005-S

60-02-02-9016-S

### Single hooks for hanging products



Chrome hooks to insert into a slat wall or a H-Pharma multi-hooks holder

Sold by 100 pcs

P. 120 mm

P. 200 mm

All hooks are equipped with a safety PVC end cap

**CHROME**

60-21-01

60-22-01

### PVC Price labels for hooks



Paper label 26 x 50 mm

Paper label 26 x 70 mm

50-04-002-01

50-04-003-02

### Charging bar for multi-hooks

Dim.: L. entraxe x H. 60 mm x P. 50 mm



Mid-distances (mm)

512 (Front Frame Gondola)

588

655

705

755

805

905

1005

1105

**RAL 7021 S**

**RAL 9016 S**

30-11-20-512-7021-S

30-11-20-512-9016-S

30-11-20-588-7021-S

30-11-20-588-9016-S

30-11-20-655-7021-S

30-11-20-655-9016-S

30-11-20-705-7021-S

30-11-20-705-9016-S

30-11-20-755-7021-S

30-11-20-755-9016-S

30-11-20-805-7021-S

30-11-20-805-9016-S

30-11-20-905-7021-S

30-11-20-905-9016-S

30-11-20-1005-7021-S

30-11-20-1005-9016-S

30-11-20-1105-7021-S

30-11-20-1105-9016-S

### Reversed multi hooks charging bar



Mid-distances (mm)

588

655

705

755

805

905

**RAL 7021 S**

**RAL 9016 S**

30-11-250-588-7021-S

30-11-250-588-9016-S

30-11-250-655-7021-S

30-11-250-655-9016-S

30-11-250-705-7021-S

30-11-250-705-9016-S

30-11-250-755-7021-S

30-11-250-755-9016-S

30-11-250-805-7021-S

30-11-250-805-9016-S

30-11-250-905-7021-S

30-11-250-905-9016-S

### H-Pharma glasses holder

---



Aluminium tube to be fixed to the wall or to a panel  
Capacity of 12 glasses  
Secured by an anti-theft lock  
Dim.: H.1200 x P. 170 mm

30-23-04

### Mirror for H-Pharma glasses holder

---



Flexible mirror for glasses holder to be hung on the upper part  
Ø 150 mm  
Sold by 2 pieces

30-23-04-01

### H-Pharma individual glasses holder

---



Plexiglas glasses holder.  
For mounting in a slot or H-Pharma load bar.  
Ideal for the H-Pharma tourniquet (30-20-40-1400).

62-50-06-01

# Part 4: Signage and merchandising

## Magnetic visual communication panel

Dim.: H. 120 x P. mm



Mid-distances (mm)	Dim.	RAL 7021 S	RAL 9016 S
588	583 x 40	30-11-01-588-7021-S	30-11-01-588-9016-S
655	650 x 90	30-11-01-655-7021-S	30-11-01-655-9016-S
705	700 x 90	30-11-01-705-7021-S	30-11-01-705-9016-S
755	750 x 90	30-11-01-755-7021-S	30-11-01-755-9016-S
805	800 x 90	30-11-01-805-7021-S	30-11-01-805-9016-S
905	900 x 90	30-11-01-905-7021-S	30-11-01-905-9016-S
1005	1000 x 90	30-11-01-1005-7021-S	30-11-01-1005-9016-S

To be affixed vertically or horizontally to an H-Pharma gondola

Application:



## Communication canopy panel

Dim.: L. distance x H. 150 x P. 200 mm



Mid-distances (mm)		RAL 7021 S	RAL 9016 S
588	587 x 155	30-11-11-588-7021-S	30-11-11-588-9016-S
655	654 x 155	30-11-11-655-7021-S	30-11-11-655-9016-S
705	704 x 155	30-11-11-705-7021-S	30-11-11-705-9016-S
755	754 x 155	30-11-11-755-7021-S	30-11-11-755-9016-S
805	804 x 155	30-11-11-805-7021-S	30-11-11-805-9016-S
905	904 x 155	30-11-11-905-7021-S	30-11-11-905-9016-S
1005	1004 x 155	30-11-11-1005-7021-S	30-11-11-1005-9016-S
1105	1104 x 155	30-11-11-1105-7021-S	30-11-11-1105-9016-S

Dim.: L. entraxe x H. 200 x P. 200 mm

Mid-distances (mm)		RAL 7021 S	RAL 9016 S
588	587 x 200	30-11-14-588-7021-S	30-11-14-588-9016-S
655	654 x 200	30-11-14-655-7021-S	30-11-14-655-9016-S
705	704 x 200	30-11-14-705-7021-S	30-11-14-705-9016-S
755	754 x 200	30-11-14-755-7021-S	30-11-14-755-9016-S
805	804 x 200	30-11-14-805-7021-S	30-11-14-805-9016-S
905	904 x 200	30-11-14-905-7021-S	30-11-14-905-9016-S
1005	1004 x 200	30-11-14-1005-7021-S	30-11-14-1005-9016-S
1105	1104 x 155	30-11-14-1105-7021-S	30-11-14-1105-9016-S

Application:



### Communication canopy panel to hang on Pharmalight furniture

Dim.: P. 20 x H. 120 mm



Mid-distances (mm)	Lengths (mm)	RAL 7021 S	RAL 9016 S
588	550	30-11-12-588-7021-S	30-11-12-588-9016-S
655	617	30-11-12-655-7021-S	30-11-12-655-9016-S
705	667	30-11-12-705-7021-S	30-11-12-705-9016-S
755	717	30-11-12-755-7021-S	30-11-12-755-9016-S
805	767	30-11-12-805-7021-S	30-11-12-805-9016-S
905	867	30-11-12-905-7021-S	30-11-12-905-9016-S

Application:



### Reversible communication canopy for Pharmalight furniture

Dim.: P. 33 x H. 117 mm



Mid-distances (mm)	Lengths (mm)	RAL 7021 S	RAL 9016 S
510	475	30-11-13-510-7021-S	30-11-13-510-9016-S
588	553	30-11-13-588-7021-S	30-11-13-588-9016-S
655	620	30-11-13-655-7021-S	30-11-13-655-9016-S
705	670	30-11-13-705-7021-S	30-11-13-705-9016-S
755	720	30-11-13-755-7021-S	30-11-13-755-9016-S
805	770	30-11-13-805-7021-S	30-11-13-805-9016-S
905	870	30-11-13-905-7021-S	30-11-13-905-9016-S

Application:



### Magnetic sign holder for Pharmalight furniture

Application:

Dimensions : L. 120 mm



Height (mm)	RAL 7021 S	RAL 9016 S
583	30-11-03-588-7021-S	30-11-03-588-9016-S
650	30-11-03-655-7021-S	30-11-03-655-9016-S
666	30-11-03-671-7021-S	30-11-03-671-9016-S
750	30-11-03-755-7021-S	30-11-03-755-9016-S
800	30-11-03-805-7021-S	30-11-03-805-9016-S
900	30-11-03-905-7021-S	30-11-03-905-9016-S
1000	30-11-03-1005-7021-S	30-11-03-1005-9016-S
1100	30-11-03-1105-7021-S	30-11-03-1105-9016-S

### Magnetic sign holder, lateral suspension for Pharmalight furniture



Mid-distances (mm)	Height (mm)	RAL 7021 S	RAL 9016 S
705	120	30-11-06-705-7021-S	30-11-06-705-9016-S
805	120	30-11-06-805-7021-S	30-11-06-805-9016-S
705	200	30-11-06-200-705-7021-S	30-11-06-200-705-9016-S
805	200	30-11-06-200-805-7021-S	30-11-06-200-805-9016-S

Application:



### Magnetic sign holder EDGE to be fixed on a gondola

Application:

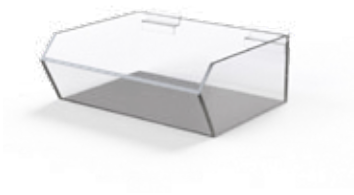
Dim.: H. xx mm



Lengths (mm)	RAL 7021 S	RAL 9016 S
588	30-11-09-140-588-7021-S	30-11-09-140-588-9016-S
655	30-11-09-140-655-7021-S	30-11-09-140-655-9016-S
705	30-11-09-140-705-7021-S	30-11-09-140-705-9016-S
755	30-11-09-140-755-7021-S	30-11-09-140-755-9016-S
805	30-11-09-140-805-7021-S	30-11-09-140-805-9016-S
905	30-11-09-140-905-7021-S	30-11-09-140-905-9016-S
1005	30-11-09-140-1005-7021-S	30-11-09-140-1005-9016-S
1105	30-11-09-140-1105-7021-S	30-11-09-140-1105-9016-S

---

### Plexiglass bin (big model)



Plexiglass bin for grooved panel or H-Pharma charging bar.

Equipped with a removable cover.

Plexiglass thickness: 4 mm

L. 300 x P. 250 x H. 150 mm

62-50-03-04

---

### Plexiglass bin (small model)



Plexiglass bin for grooved panel or H-Pharma charging bar.

Plexiglass thickness: 4 mm

L. 150 x P. 230 x H. 150 mm

62-50-03-05

---

### Leaflet holders



Acrylic leaflet holders for slat wall

Portrait A4

62-50-04-01

Portrait A5

62-50-04-02



### Display holder for window "guard sheet"

---



PVC self-adhesive posters  
Formats DIN A4  
External dimensions: W. 244 x H. 331 mm  
Portrait to landscape orientation  
UV stabilised film

89-30-10

### Non-perforated acrylic sleeve

---



U-shaped pocket for A4 posters  
Possibility of 2 posters per pocket  
Transparent acrylic, thickness: 2 mm  
L. 210 x H. 297 mm

89-30-11

### Clip porte-affichette pour vasque promotionnelle

---



Plastic holder for acrylic sleeve

89-30-01

## Part 5: Fixing and stabilisation support

### Hooks for wooden back panel



To screw into wooden back panels  
Hooks fitting to H-Pharma supports

Sold per pair

60-15-050

### Hooks P. 35



Steel hooks to create any support  
To fix into rack and pinion

Pitch 35

Sold per pair

Right hook

Left hook

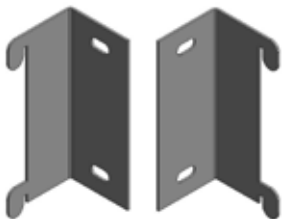
H. 45 x L. 32 x P. 25 mm

**RAL 9005 G**

60-15-051.01-9005-G

60-15-051.02-9005-G

### Hooks P. 70



Steel hooks to create any support  
To fix into rack and pinion

Pas 70

Sold per pair

Right hook

Left hook

H. 45 x L. 32 x P. 25 mm

**RAL 9005 G**

60-15-052.01-9005-G

60-15-052.02-9005-G

### Hooks Z 35 mm for panel 18 mm



Pas 70

Sold per pair

Right hook

Left hook

H. 84 x P. 70 mm

**RAL 9005 G**

60-15-058.01-HDG

60-15-058.02-HDG

### Connection lead for Pharmalight



To assemble on 30/30 tube with a 35 pitch

Pitch 35

H. 70 x l. 32 x D. 16 mm

**RAL 7021 S**

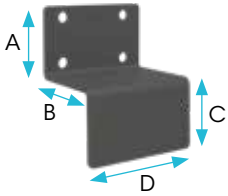
31-01-30-7021-S

**RAL 9016 S**

31-01-30-9016-S

Fixing bracket for wooden panel and connecting bar

27-04-002-HDG



A = 31,5 | B = 38,5 | C = 30 | D = 50 L

Support for Pharmalight bracket

Fixing of 1 tube 30/30

31-04-002-30

Fixing of 2 tubes 30/30

31-04-002-60



Wall/ceiling mounting insert 30/30

Wall/ceiling mounting insert 25 x 25 x 25 mm

31-04-002



Wall/ceiling mounting insert for 30/60 tube

Ceiling mounting insert for 30/60 upright

**RAL 7021 S**

**RAL 9016 S**

H. 55 x W. 25 x P. 30 mm

31-04-003-7021-S

31-04-003-9016-S



Ceiling jack 30/30 M10

Ceiling jack M10 Ø 30 x h. 55 mm

61-30-06



### Mounting brackets



Bracket to ensure the stability of the « I » and « L » uprights, as a safety measure, At least 1 bracket will be supplied for each upright that can be fixed to a wall. For "I" uprights, 2 brackets are required.

80 x 210 x 30 mm

60-50-01

### Extension profile for 30/60 tube - L. 100 mm



Extension tube to length-wise extend a H-Pharma upright foot  
Pre-drilled for the integration of a jack stand not supplied

L. 185 mm

Extension: 100 mm

30-04-3060-100

Extension: 200 mm

30-04-3060-200

### Extension part 30/60 - H. 200 mm



Profile to vertically extend a H-Pharma upright.  
Element to be assembled with a 30/60 tube cut to size.  
For use in combination with H-Pharma trims, please note the available heights of the range.

H. 200 x L. 25 x P. 55 mm

30-3060-200

### Rotating castor



Load capacity: 90 kg per castor  
H. 73 mm / 24 mm - M 10

30-06-10-006

### Rotating castor with brake



Load capacity: 60 kg per castor  
H. 73 mm / 24 mm - M 10

30-06-10-007

### Table feet



5° inclined foot to create a table  
Equipped with an adjustable foot  
H. 780 x L. 80 x W. 40 mm

Right

Left

**RAL 9016 S**

30-22-001-780.01-9016-S

30-22-001-780.02-9016-S

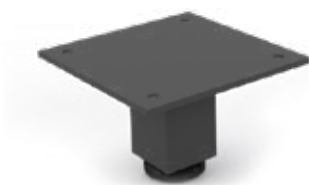
### 1/2 table frame



1/2 frame to create a table  
Equipped with an adjustable foot  
H. 780 x P. 475 x L. 580 mm

30-22-475-580

### Square foot 60 mm 30/30



Square foot for small furniture  
Element to be screwed with ø 5 screws  
Maximum load of 50 kg/foot  
H. 60 x P. 90 x W. 90 mm

**RAL 7021 S**

61-60-90-7021-S

**RAL 9016 S**

61-60-90-9016-S

## Part 6: Presentation furniture

### Promotional display unit

4 clear glass pediments fixed in corner profiles for better security

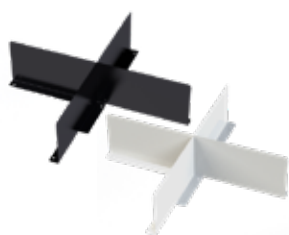


L.& P	Height	RAL 7021 S	RAL 9016 S
597 mm	900 mm	30-20-60-60-950-7021-S	30-20-60-60-950-9016-S

Mobile element on 360° swivel castors

Useful depth of the cube: 250 mm

Included:



Steel magnetic dividers

1 x L. 567 mm x H. 120 mm

2 x L. 281 mm x H. 120 mm

4 possible compartments

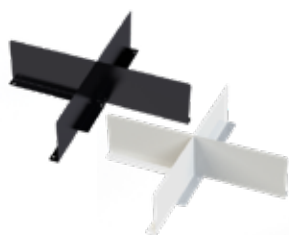
L.& P	Height	RAL 7021 S	RAL 9016 S
497 mm	900 mm	30-20-50-50-950-7021-S	30-20-50-50-950-9016-S



Mobile element on 360° swivel castors

Useful depth of the cube: 250 mm

Included:



Steel magnetic dividers

1 x L. 467 mm x H. 120 mm

2 x L. 231 mm x H. 120 mm

4 possible compartments

L.& P	Height	RAL 7021 S	RAL 9016 S
267 mm	900 mm	30-20-27-50-950-7021-S	30-20-27-50-950-9016-S



Useful depth of the cube: 250 mm

Included:



Steel magnetic dividers

2 x L. 231 mm x H. 120 mm

3 possible compartments

## Promotional display unit in wood



4 clear glass pediments fixed in corner profiles for greater security

### L. & P

542 mm

### Height

900 mm

**mélamine H3157-ST12**

18-30-20-50-50-950

Mobile element on 360° swivel castors

Underneath a storage room with door and possibility to close with a key

Useful space inside: 504 mm x 505 mm

### Included:

### Steel magnetic dividers

1 x L. 467 mm x H. 120 mm

2 x L. 231 mm x H. 120 mm

4 possible compartments

## Reversible plexiglass disposer bin

Disposer bin + 2 A4 holders

62-50-29-29-90

A4 holders

62-50-29-29-90-01

Disposer bin WITHOUT A4 support

62-50-29-29-90-02



### Presentation cube 540 mm



- Powder coated cubic unit
- Ideal to highlight products and displays
- Placed on castors
- H. 540 x L. 540 x W. 540 mm

**RAL 7021 S**

30-20-54-54-540-7021-S

**RAL 9016 S**

30-20-54-54-540-9016-S

### Presentation cube 790 mm



- Powder coated cubic unit
- Ideal to highlight products and displays
- Placed on castors
- H. 790 x L. 540 x W. 540 mm

**RAL 7021 S**

30-20-54-54-790-7021-S

**RAL 9016 S**

30-20-54-54-790-9016-S

### Presentation cube 1080 mm



- Powder coated cubic unit
- Ideal to highlight products and displays
- Placed on castors
- H. 1080 x L. 540 x W. 540 mm

**RAL 7021 S**

30-20-54-54-1080-7021-S

**RAL 9016 S**

30-20-54-54-1080-9016-S



### Tripode 450



- Feet with 3 legs to create a table
- Weight 7 kg
- H. 450 x ø 200 mm

**RAL 7021 S**

30-10-50-450-7021-S

**RAL 9016 S**

30-10-50-450-9016-S

### Tripode 550



- Feet with 3 legs to create a table
- Weight 8 kg:
- H. 550 x ø 250 mm

**RAL 7021 S**

30-10-50-550-7021-S

**RAL 9016 S**

30-10-50-550-9016-S

### Tripode 650



- Feet with 3 legs to create a table
- Weight 11 kg
- H. 650 x ø 350 mm

**RAL 7021 S**

30-10-50-650-7021-S

**RAL 9016 S**

30-10-50-650-9016-S

### Tripode 750



- Feet with 3 legs to create a table
- Weight 18 kg
- H. 750 x ø 450 mm

**RAL 7021 S**

30-10-50-750-7021-S

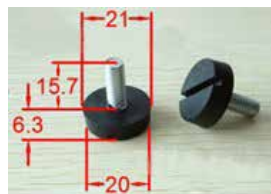
**RAL 9016 S**

30-10-50-750-9016-S

### Pharmaslim 20/20 open frame

- Open frame for MULTIPLE use -to decorate by project-fitter
- Supplied with attached: 4 inserts M6 and feet leveler diam. 20 mm (6,5 to 15mm)
- Square steel profile 20 x 20 x 2 mm powder painted
- No perforations for any accessories, hang up, or feet leveler
- Possible to install and use in 3 different directions
- With coverings or shelves up to your creativity

Design suggestion:



Overall measures in mm

Side 1	Side 2	Side 3	RAL 7021 S	RAL 9016 S	Weight
440	250	583	31-20-440-250-583-7021-S	31-20-440-250-583-9016-S	5,22 kg
500	440	300	31-20-500-440-300-7021-S	31-20-500-440-300-9016-S	5,09 kg
583	500	300	31-20-583-500-300-7021-S	31-20-583-500-300-9016-S	5,71 kg
700	583	400	31-20-700-583-400-7021-S	31-20-700-583-400-9016-S	7,03 kg
800	650	500	31-20-800-650-500-7021-S	31-20-800-650-500-9016-S	8,22 kg

## Presentation stand « Rhombus »

- Structure in 20/20 tube equipped with grid panels at the bottom
- Wooden fittings left to the designer's creativity
- Powder coated steel
- Accessories included: 4 legs + 4 supports
- Available accessories: reversible display trays

### Dimensions:

L. 540 x W. 540 x H. 790 mm

**RAL 7021 S**

31-20-790-RR540-R540-7021-S

**RAL 9016 S**

31-20-790-RR540-R540-9016-S



### Reversible display tray

### Dimensions:

L. 249 x W. 249 x H. 120 mm

**RAL 7021 S**

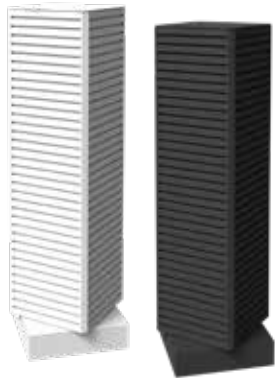
30-23-06-7021-S

**RAL 9016 S**

30-23-06-9016-S



## Tourniquet



- 360° rotating tower
- Minimum noise due to high quality ball bearings
- Increased exposure of products due to grooves every 35 mm
- Grooved panels in powder-coated aluminium
- Delivered assembled, ready to use
- Rotating castors for easy movement
- H. 1400 x L. 400 mm

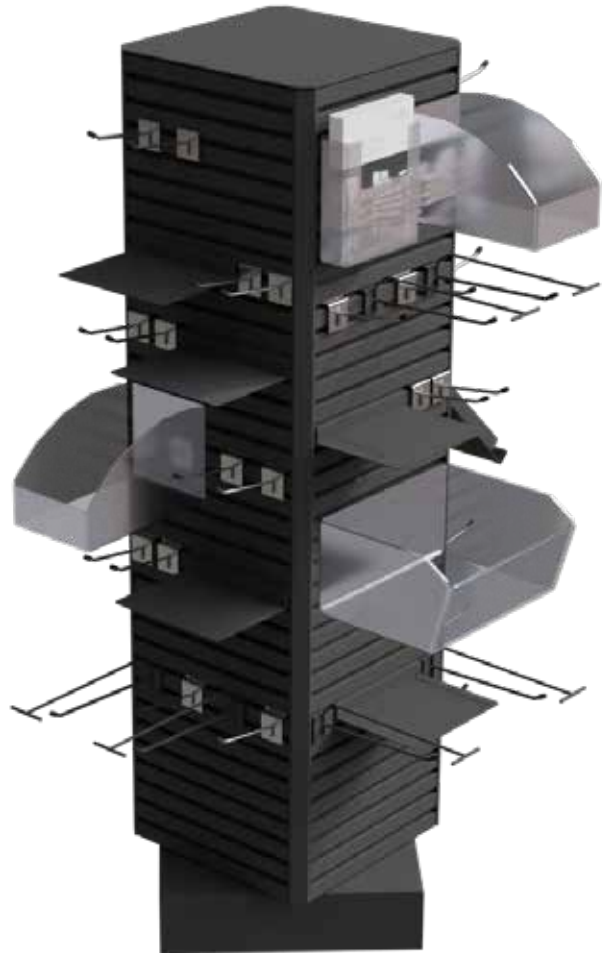
Pitch 35

**RAL 7021 S**

30-20-40-1400-7021-S

**RAL 9016 S**

30-20-40-1400-9016-S



# Part 7: Podiums

## Clear acryl podiums (2 levels)

Dimensions L x D x H

295 mm x 160 mm x 135 mm

62-50-80-300

345 mm x 160 mm x 135 mm

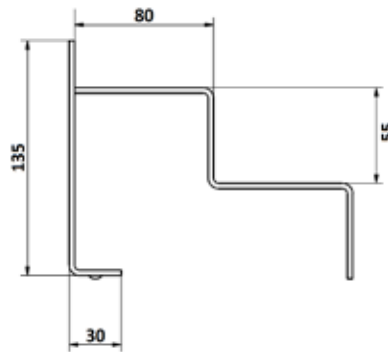
62-50-80-350

395 mm x 160 mm x 135 mm

62-50-80-400

445 mm x 160 mm x 135 mm

62-50-80-450



## Clear acryl podiums (3 levels)

Dimensions L x D x H

295 mm x 180 mm x 150 mm

62-50-60-300

345 mm x 180 mm x 150 mm

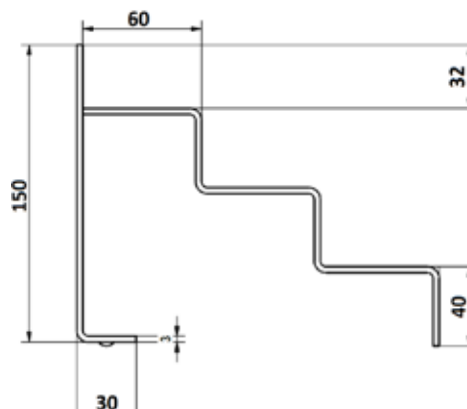
62-50-60-350

395 mm x 180 mm x 150 mm

62-50-60-400

445 mm x 180 mm x 150 mm

62-50-60-450



Packed in sets of 6 pieces



## Part 8: Various

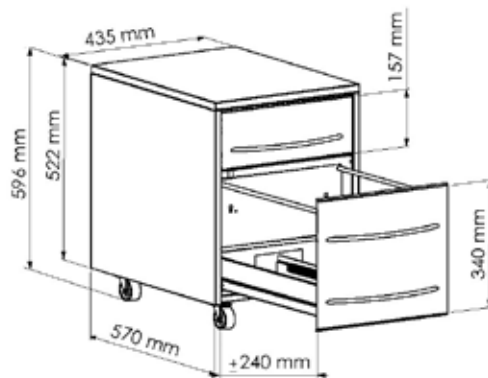
### Mobile 2-drawers unit

1 drawer + 1 hanging file drawer + pencil box for small accessories

**Dimensions:** P. 570 x L. 435 x H. 596 mm

**Dimensions drawers:** 1 x P. 320 x H. 340 mm  
1 x P. 320 x H. 157 mm

30-12-566-3397-2



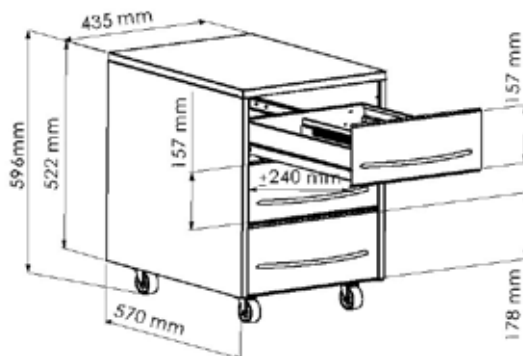
### Mobile 3-drawers unit

3 drawers + pencil box for small accessories

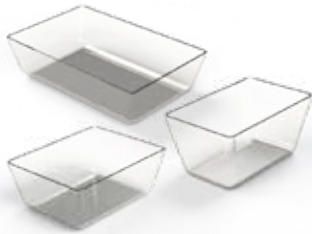
**Dimensions:** P. 570 x L. 435 x H. 596 mm

**Dimensions drawers:** 1 x P. 320 x H. 178 mm  
2 x P. 320 x H. 157 mm

30-12-566-3397-3



## Keyboard of completed preparations



High resistance clear acrylic  
Ideal for products

Dimensions	Useful height	
L. 197 x l. 126 mm	50 mm	62-50-03-01
L. 126 x l. 98 mm	50 mm	62-50-03-02
L. 98 x l. 63 mm	50 mm	62-50-03-03

## Cashier's tray



Cash basket to be incorporated in H-Pharma drawers  
Colours black + metal springs  
6 banknote compartments, 8 coin compartments  
L. 356 x P. 322 x H. 60 mm

60-70-01

## Cash drawer



Cash drawer with push button  
6 money compartments, 8 coin compartments  
L. 410 x P. 420 x H. 100 mm

60-70-21

## Ointment plate



Black/white 6 mm safety glass panel on rubber base  
rubber 425 mm x 510 mm

35-09-01

All information in this catalogue is not binding and may be changed at any time. The products are supplied in a suitable packaging according to the transport standards and adapted to the order.

H-Pharma reserves the right to change technical aspects of the product without notice to the customer and the company's terms and conditions always apply. No part of this catalogue may be copied without written and signed permission from Huwil.



**H - P H A R M A**

Your Partner in Pharmacy Equipment

H-Pharma Medical Storage • Am Dueref 48-2, L-9645 Derenbach • Luxembourg  
Tel: +32 51 62 21 01 • info@hpharma.eu • www.hpharma.eu

